

ZADH2 RABBIT PAB

Cat.#: S213307

Product Name: Anti-ZADH2 Rabbit Polyclonal Antibody

Synonyms:

UNIPROT ID: Q8N4Q0 (Gene Accession - NP_787103)

Background: ZADH2 (zinc binding alcohol dehydrogenase domain containing 2) is a 377 amino acid protein that belongs to the zinc-containing alcohol dehydrogenase family and is encoded by a gene which maps to human chromosome 18. Chromosome 18 houses over 300 protein-coding genes and contains nearly 76 million bases. There are a variety of diseases associated with defects in chromosome 18-localized genes, some of which include Trisomy 18 (also known as Edwards syndrome), Niemann-Pick disease, hereditary hemorrhagic telangiectasia, erythropoietic protoporphyria and follicular lymphomas.

Immunogen: Synthetic peptide of human ZADH2

Applications: ELISA, IHC

Recommended Dilutions: IHC: 50-200; ELISA: 2000-5000

Host Species: Rabbit

Clonality: Rabbit Polyclonal

Isotype: Immunogen-specific rabbit IgG

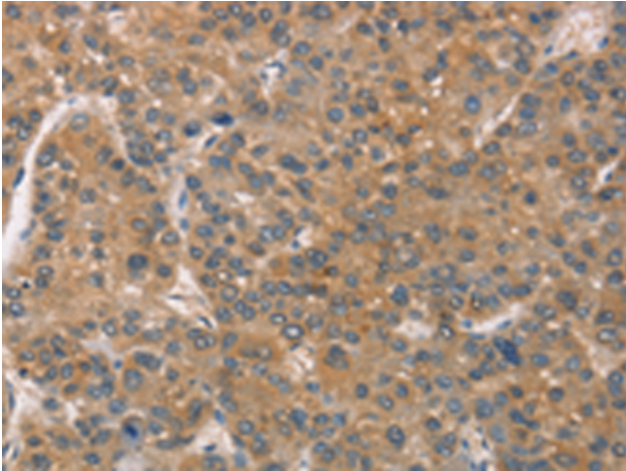
Purification: Antigen affinity purification

Species Reactivity: Human, Mouse

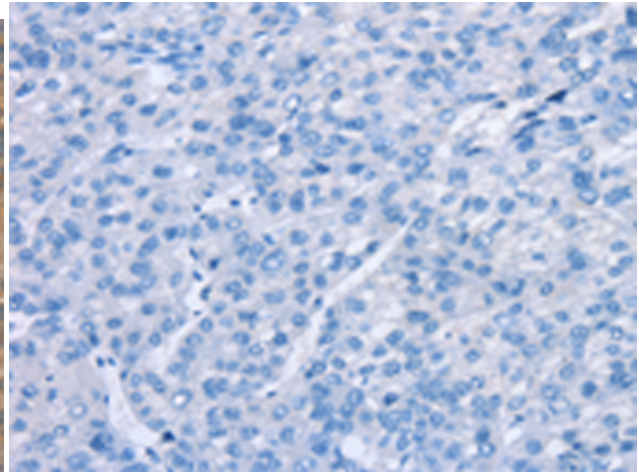
Constituents: PBS (without Mg²⁺ and Ca²⁺), pH 7.4, 150 mM NaCl, 0.05% Sodium Azide and 40% glycerol

Research Areas: Cell Biology

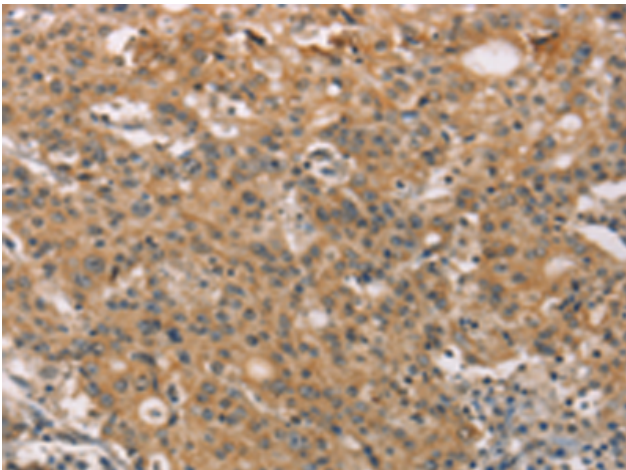
Storage & Shipping: Store at -20°C. Avoid repeated freezing and thawing



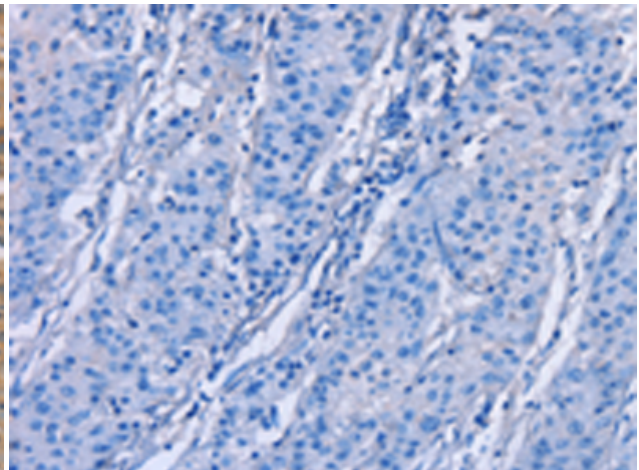
Immunohistochemistry analysis of paraffin embedded Human liver cancer tissue using 213307 (ZADH2 Antibody) at a dilution of 1/51 (Cytoplasm).



In comparison with the IHC on the left, the same paraffin-embedded Human liver cancer tissue is first treated with the synthetic peptide and then with 213307 (Anti-ZADH2 Antibody) at dilution 1/51.



The image on the left is immunohistochemistry of paraffin-embedded Human gastric cancer tissue using 213307 (Anti-ZADH2 Antibody) at a dilution of 1/51.



In comparison with the IHC on the left, the same paraffin-embedded Human gastric cancer tissue is first treated with synthetic peptide and then with D156003 (Anti-ZADH2 Antibody) at dilution 1/51.