

## ZBED1 RABBIT PAB

**Cat.#:** S218773

**Product Name:** Anti-ZBED1 Rabbit Polyclonal Antibody

**Synonyms:** ALTE; DREF; TRAMP; hDREF

**UNIPROT ID:** O96006 (Gene Accession - BC015030 )

**Background:** This gene is located in the pseudoautosomal region 1 (PAR1) of X and Y chromosomes. It was earlier identified as a gene with similarity to Ac transposable elements, however, was found not to have transposase activity. Later studies show that this gene product is localized in the nucleus and functions as a transcription factor. It binds to DNA elements found in the promoter regions of several genes related to cell proliferation, such as histone H1, hence may have a role in regulating genes related to cell proliferation. Alternatively spliced transcript variants with different 5' untranslated region have been found for this gene.

**Immunogen:** Fusion protein of human ZBED1

**Applications:** ELISA, WB, IHC

**Recommended Dilutions:** IHC: 50-300;WB: 200-1000;ELISA: 2000-5000

**Host Species:** Rabbit

**Clonality:** Rabbit Polyclonal

**Isotype:** Immunogen-specific rabbit IgG

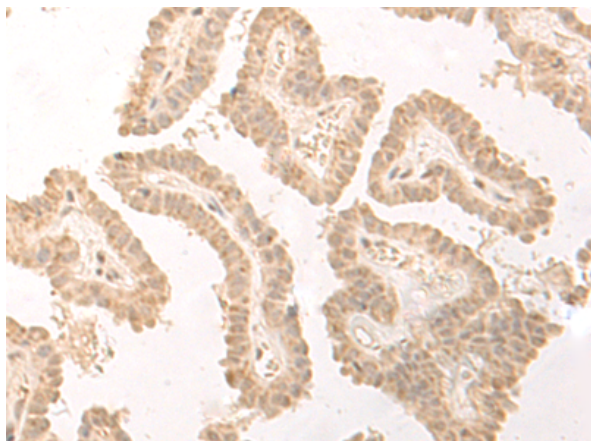
**Purification:** Antigen affinity purification

**Species Reactivity:** Human

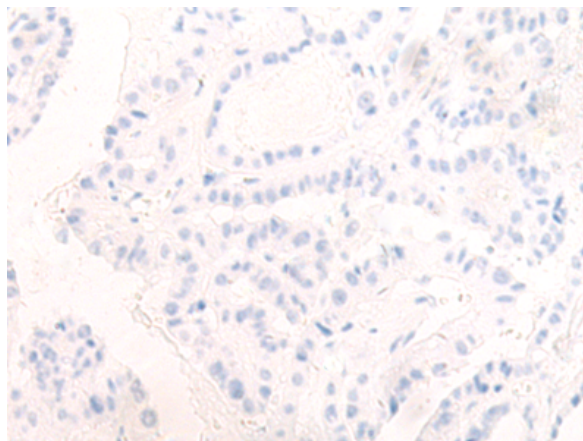
**Constituents:** PBS (without Mg<sup>2+</sup> and Ca<sup>2+</sup>), pH 7.4, 150 mM NaCl, 0.05% Sodium Azide and 40% glycerol

**Research Areas:** Epigenetics and Nuclear Signaling

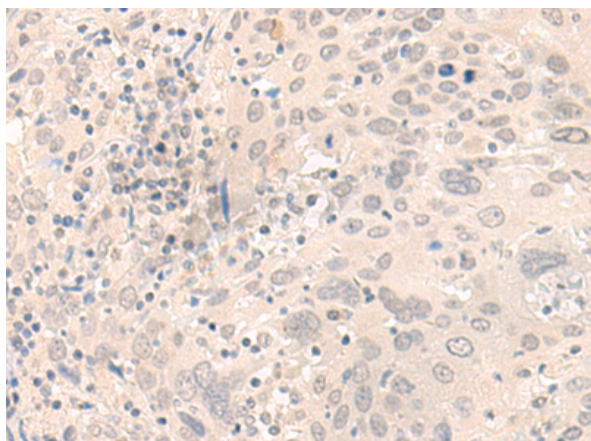
**Storage & Shipping:** Store at -20°C. Avoid repeated freezing and thawing



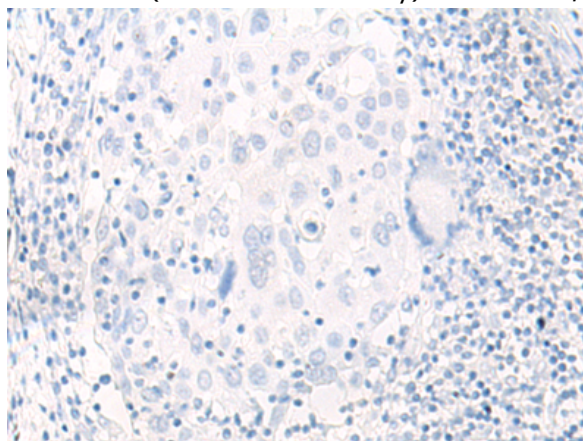
Immunohistochemistry analysis of paraffin embedded Human thyroid cancer tissue using 218773(ZBED1 Antibody) at a dilution of 1/50(Nucleus).



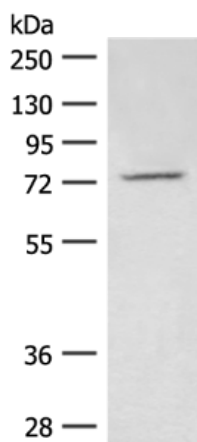
In comparison with the IHC on the left, the same paraffin-embedded Human thyroid cancer tissue is first treated with the fusion protein and then with 218773(Anti-ZBED1 Antibody) at dilution 1/50.



The image on the left is immunohistochemistry of paraffin-embedded Human cervical cancer tissue using 218773(Anti-ZBED1 Antibody) at a dilution of 1/50.



In comparison with the IHC on the left, the same paraffin-embedded Human cervical cancer tissue is first treated with fusion protein and then with D225146(Anti-ZBED1 Antibody) at dilution 1/50.



Gel: 8%SDS-PAGE, Lysate: 40 µg;  
Lane: A549 cell lysate;  
Primary antibody: 218773(ZBED1 Antibody) at dilution 1/350;  
Secondary antibody: Goat anti rabbit IgG at 1/8000 dilution;  
Exposure time: 1 minute



# Product Description

Pioneering GTPase and Oncogene Product Development since 2010

---