

## ZBTB10 RABBIT PAB

**Cat.#:** S221505

**Product Name:** Anti-ZBTB10 Rabbit Polyclonal Antibody

**Synonyms:** RINZF

**UNIPROT ID:** Q96DT7 (Gene Accession - NP\_001099009)

**Background:** RINZF, also known as ZBTB10 (zinc finger and BTB domain containing protein 10), is a 847 amino acid protein that contains one BTB/POZ domain and two C2H2-type zinc fingers. Localized to the nucleus, RINZF is believed to play a role in transcriptional regulation. Specifically, RINZF is capable of binding to the CACC element of the Gastrin promoter. In this regard, RINZF competes with Sp1 for CACC binding and interferes with Sp1 transactivation, thereby regulating Gastrin gene expression. The rat RINZF protein shares 98% homology with the human RINZF protein, suggesting that RINZF is a conserved protein. Due to alternative splicing events, two RINZF isoforms exist. In addition, RINZF may be phosphorylated by ATR or ATM upon DNA damage.

**Immunogen:** Synthetic peptide of human ZBTB10

**Applications:** ELISA, WB, IHC

**Recommended Dilutions:** IHC: 50-300;WB: 500-2000;ELISA: 5000-10000

**Host Species:** Rabbit

**Clonality:** Rabbit Polyclonal

**Isotype:** Immunogen-specific rabbit IgG

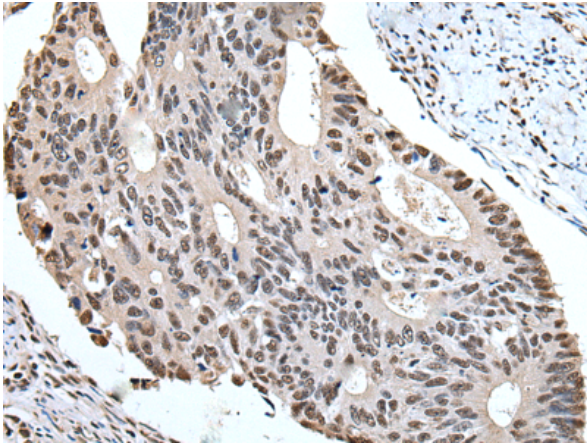
**Purification:** Antigen affinity purification

**Species Reactivity:** Human

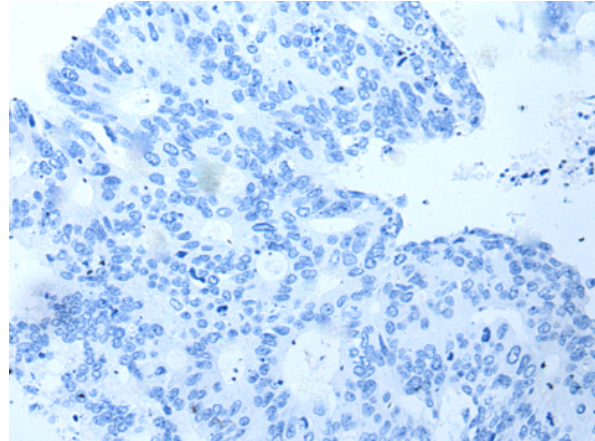
**Constituents:** PBS (without Mg<sup>2+</sup> and Ca<sup>2+</sup>), pH 7.4, 150 mM NaCl, 0.05% Sodium Azide and 40% glycerol

**Research Areas:** Epigenetics and Nuclear Signaling

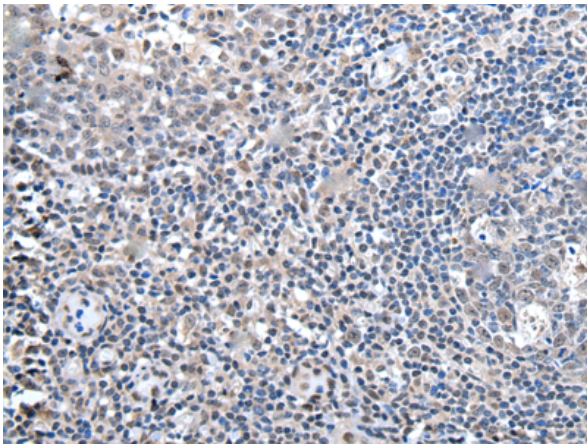
**Storage & Shipping:** Store at -20°C. Avoid repeated freezing and thawing



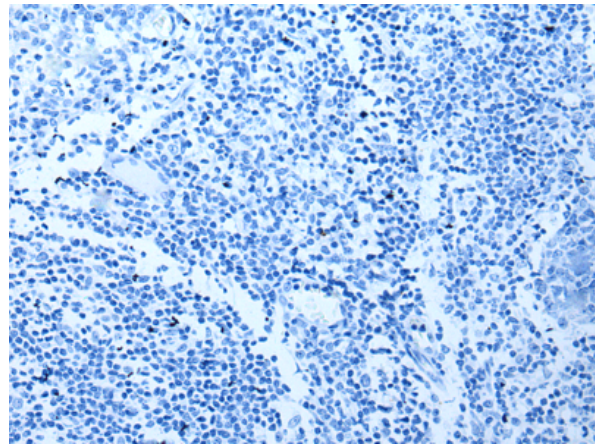
Immunohistochemistry analysis of paraffin embedded Human colorectal cancer tissue using 221505(ZBTB10 Antibody) at a dilution of 1/100(Nucleus and Cytoplasm).



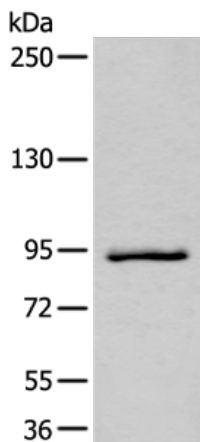
In comparison with the IHC on the left, the same paraffin-embedded Human colorectal cancer tissue is first treated with the synthetic peptide and then with 221505(Anti-ZBTB10 Antibody) at dilution 1/100.



The image on the left is immunohistochemistry of paraffin-embedded Human tonsil tissue using 221505(Anti-ZBTB10 Antibody) at a dilution of 1/100.



In comparison with the IHC on the left, the same paraffin-embedded Human tonsil tissue is first treated with synthetic peptide and then with D263131(Anti-ZBTB10 Antibody) at dilution 1/100.



Gel: 6%SDS-PAGE, Lysate: 40 µg;  
Lane: Jurkat cell lysate;  
Primary antibody: 221505(ZBTB10 Antibody) at dilution 1/800;  
Secondary antibody: Goat anti rabbit IgG at 1/8000 dilution;  
Exposure time: 40 seconds



# Product Description

Pioneering GTPase and Oncogene Product Development since 2010

---