

ZBTB11 RABBIT PAB

Cat.#: S221506

Product Name: Anti-ZBTB11 Rabbit Polyclonal Antibody

Synonyms: ZNF913; ZNF-U69274

UNIPROT ID: O95625 (Gene Accession - NP_055230)

Background: The Zinc finger and BTB domain-containing protein 11 (ZBTB11) contains 1 BTB (POZ) domain and 12 C2H2-type zinc fingers suggesting a role in transcription regulation. The gene encoding ZBTB11 maps to chromosome 3, which contains over 1,100 genes. Notably, a chemokine receptor gene cluster and a variety of human cancer related loci reside on chromosome 3. Particular regions of the chromosome 3 short arm are deleted in many types of cancer cells as well.

Immunogen: Synthetic peptide of human ZBTB11

Applications: ELISA, IHC

Recommended Dilutions: IHC: Oct-50; ELISA: 5000-10000

Host Species: Rabbit

Clonality: Rabbit Polyclonal

Isotype: Immunogen-specific rabbit IgG

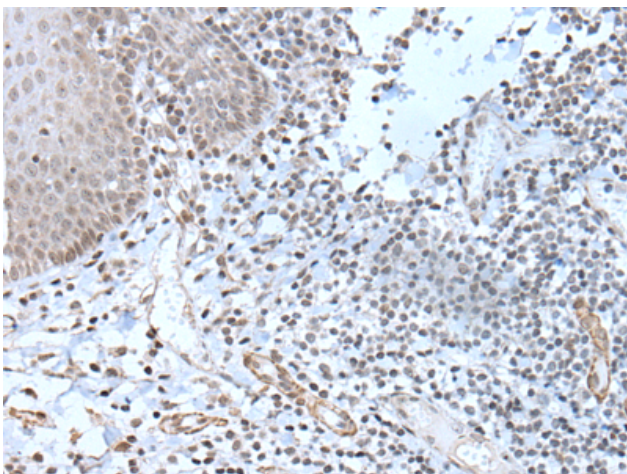
Purification: Antigen affinity purification

Species Reactivity: Human

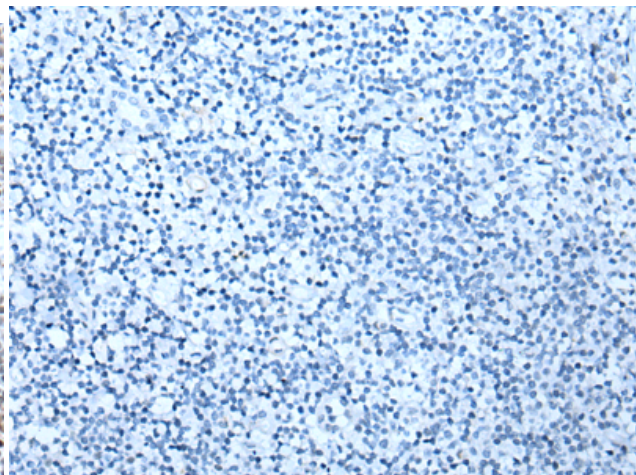
Constituents: PBS (without Mg²⁺ and Ca²⁺), pH 7.4, 150 mM NaCl, 0.05% Sodium Azide and 40% glycerol

Research Areas: Epigenetics and Nuclear Signaling

Storage & Shipping: Store at -20°C. Avoid repeated freezing and thawing



Immunohistochemistry analysis of paraffin embedded Human tonsil tissue using 221506(ZBTB11 Antibody) at a dilution of 1/20(Nucleus).



In comparison with the IHC on the left, the same paraffin-embedded Human tonsil tissue is first treated with the synthetic peptide and then with 221506(Anti-ZBTB11 Antibody) at dilution 1/20.