

ZBTB18 RABBIT PAB

Cat.#: S218238

Product Name: Anti-ZBTB18 Rabbit Polyclonal Antibody

Synonyms: RP58; MRD22; TAZ-1; ZNF238; C2H2-171

UNIPROT ID: Q99592 (Gene Accession - BC036677)

Background: This gene encodes a C2H2-type zinc finger protein which acts a transcriptional repressor of genes involved in neuronal development. The encoded protein recognizes a specific sequence motif and recruits components of chromatin to target genes. Alternative splicing results in multiple transcript variants.

Immunogen: Fusion protein of human ZBTB18

Applications: ELISA, IHC

Recommended Dilutions: IHC: 40-250; ELISA: 5000-10000

Host Species: Rabbit

Clonality: Rabbit Polyclonal

Isotype: Immunogen-specific rabbit IgG

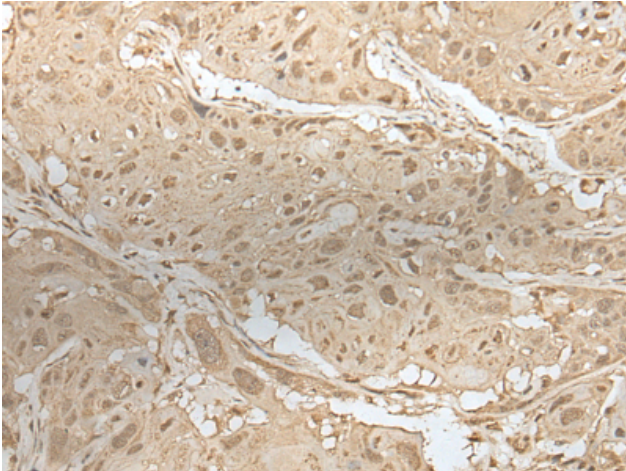
Purification: Antigen affinity purification

Species Reactivity: Human, Mouse, Rat

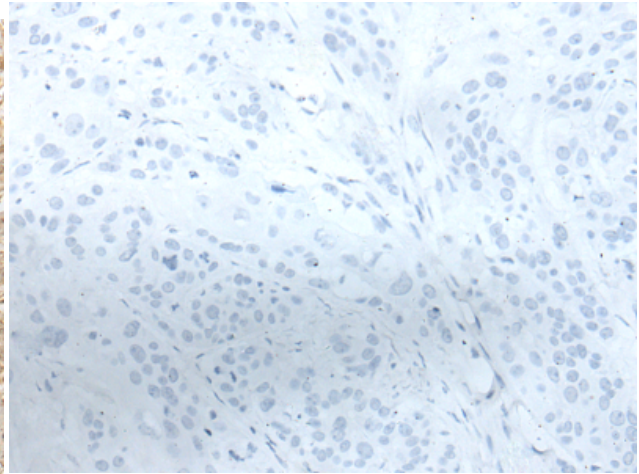
Constituents: PBS (without Mg²⁺ and Ca²⁺), pH 7.4, 150 mM NaCl, 0.05% Sodium Azide and 40% glycerol

Research Areas: Epigenetics and Nuclear Signaling

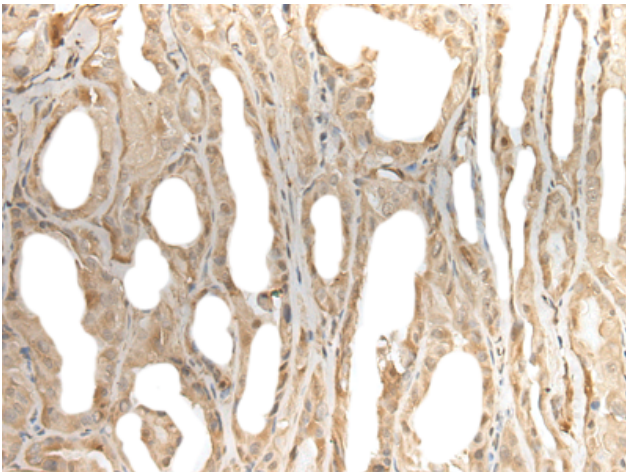
Storage & Shipping: Store at -20°C. Avoid repeated freezing and thawing



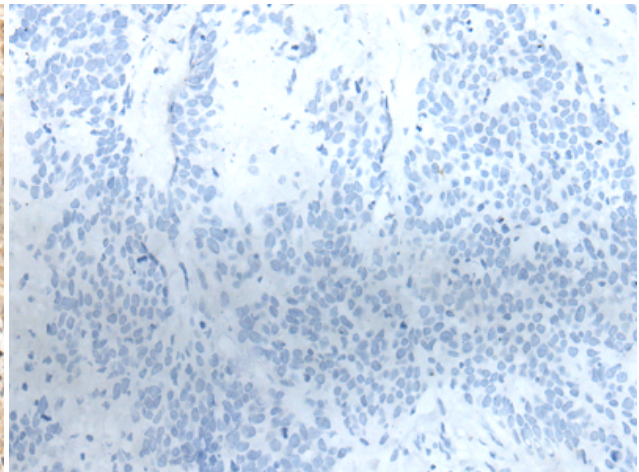
Immunohistochemistry analysis of paraffin embedded Human esophagus cancer tissue using 218238(ZBTB18 Antibody) at a dilution of 1/50(Nucleus).



In comparison with the IHC on the left, the same paraffin-embedded Human esophagus cancer tissue is first treated with the fusion protein and then with 218238(Anti-ZBTB18 Antibody) at dilution 1/50.



The image on the left is immunohistochemistry of paraffin-embedded Human thyroid cancer tissue using 218238(Anti-ZBTB18 Antibody) at a dilution of 1/50.



In comparison with the IHC on the left, the same paraffin-embedded Human thyroid cancer tissue is first treated with fusion protein and then with D224010(Anti-ZBTB18 Antibody) at dilution 1/50.