

## ZBTB2 RABBIT PAB

**Cat.#:** S214924

**Product Name:** Anti-ZBTB2 Rabbit Polyclonal Antibody

**Synonyms:** ZNF437

**UNIPROT ID:** Q8N680 (Gene Accession - NP\_065912 )

**Background:** ZBTB2 is a 514 amino acid nuclear protein that contains one BTB (POZ) domain and 4 C2H2-type zinc fingers. ZBTB25, also known as ZNF46 or KUP, is a 435 amino acid nuclear protein that is expressed mainly in hematopoietic cells and testis and contains one BTB (POZ) domain and 2 C2H2-type zinc fingers.

**Immunogen:** Synthetic peptide of human ZBTB2

**Applications:** ELISA, IHC

**Recommended Dilutions:** IHC: 30-150; ELISA: 2000-10000

**Host Species:** Rabbit

**Clonality:** Rabbit Polyclonal

**Isotype:** Immunogen-specific rabbit IgG

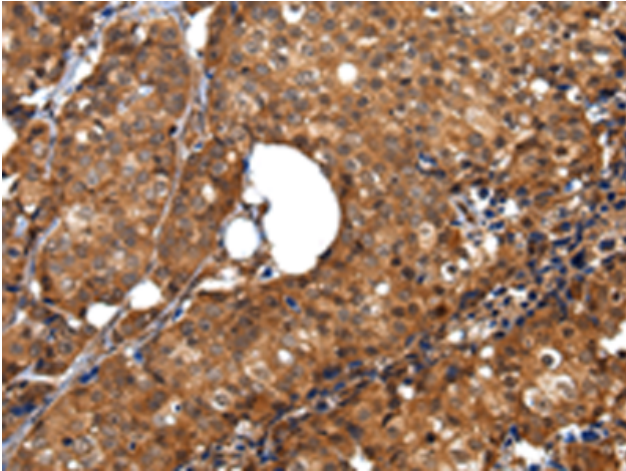
**Purification:** Antigen affinity purification

**Species Reactivity:** Human

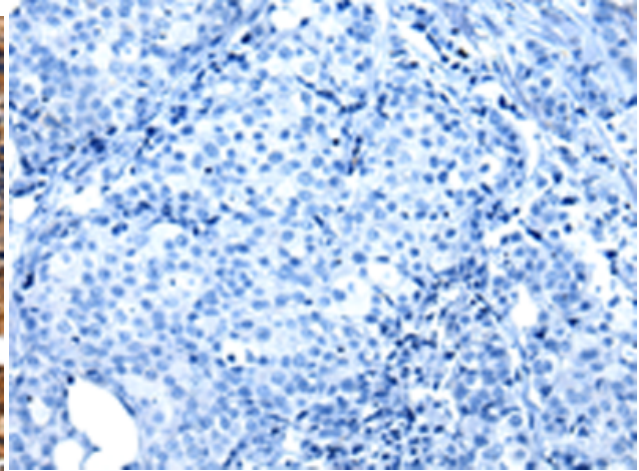
**Constituents:** PBS (without Mg<sup>2+</sup> and Ca<sup>2+</sup>), pH 7.4, 150 mM NaCl, 0.05% Sodium Azide and 40% glycerol

**Research Areas:** Epigenetics and Nuclear Signaling, Cancer

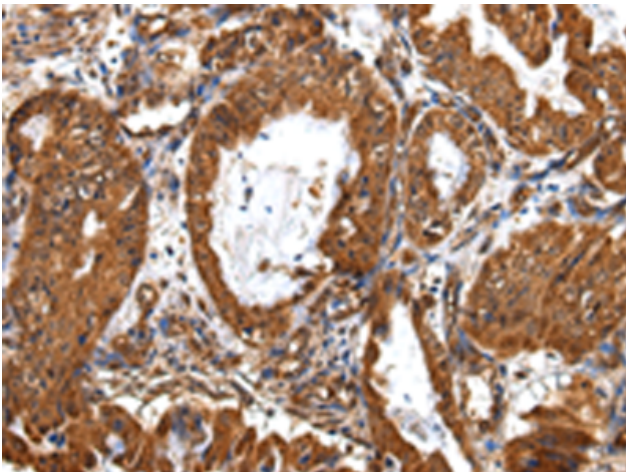
**Storage & Shipping:** Store at -20°C. Avoid repeated freezing and thawing



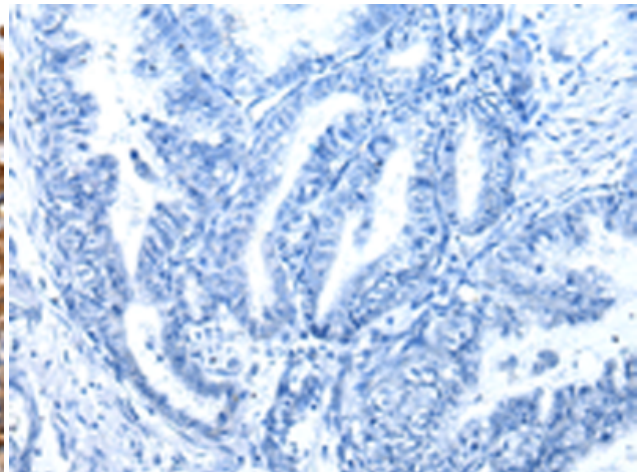
Immunohistochemistry analysis of paraffin embedded Human breast cancer tissue using 214924(ZBTB2 Antibody) at a dilution of 1/40(Nucleus and Cytoplasm ).



In comparison with the IHC on the left, the same paraffin-embedded Human breast cancer tissue is first treated with the synthetic peptide and then with 214924(Anti-ZBTB2 Antibody) at dilution 1/40.



The image on the left is immunohistochemistry of paraffin-embedded Human esophagus cancer tissue using 214924(Anti-ZBTB2 Antibody) at a dilution of 1/40.



In comparison with the IHC on the left, the same paraffin-embedded Human esophagus cancer tissue is first treated with synthetic peptide and then with D162628(Anti-ZBTB2 Antibody) at dilution 1/40.