

ZBTB40 RABBIT PAB

Cat.#: S221509

Product Name: Anti-ZBTB40 Rabbit Polyclonal Antibody

Synonyms: ZNF923

UNIPROT ID: Q9NUA8 (Gene Accession - NP_055685)

Background: May be involved in transcriptional regulation.

Immunogen: Synthetic peptide of human ZBTB40

Applications: ELISA, IHC

Recommended Dilutions: IHC: 20-100; ELISA: 5000-10000

Host Species: Rabbit

Clonality: Rabbit Polyclonal

Isotype: Immunogen-specific rabbit IgG

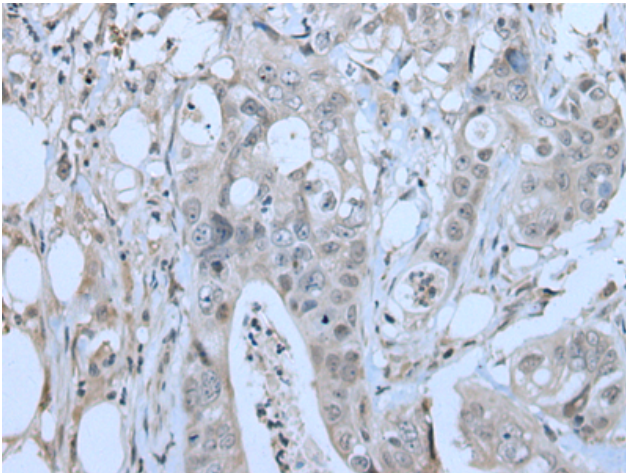
Purification: Antigen affinity purification

Species Reactivity: Human

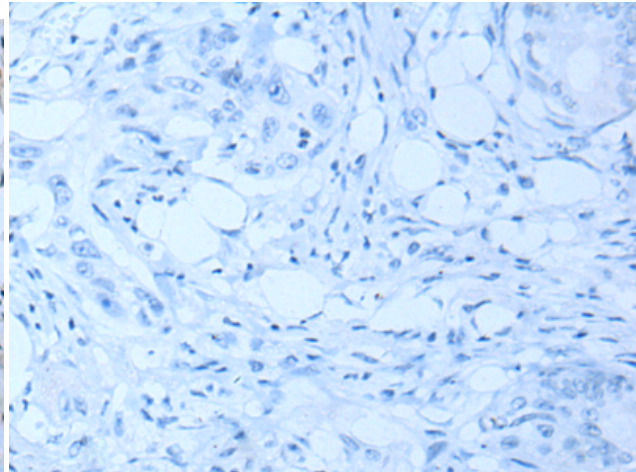
Constituents: PBS (without Mg²⁺ and Ca²⁺), pH 7.4, 150 mM NaCl, 0.05% Sodium Azide and 40% glycerol

Research Areas: Epigenetics and Nuclear Signaling

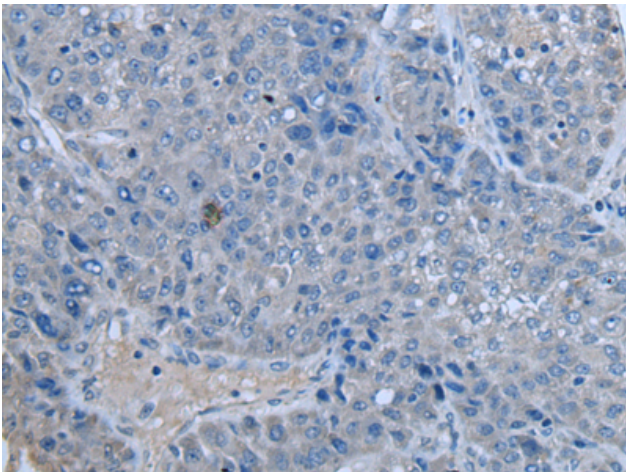
Storage & Shipping: Store at -20°C. Avoid repeated freezing and thawing



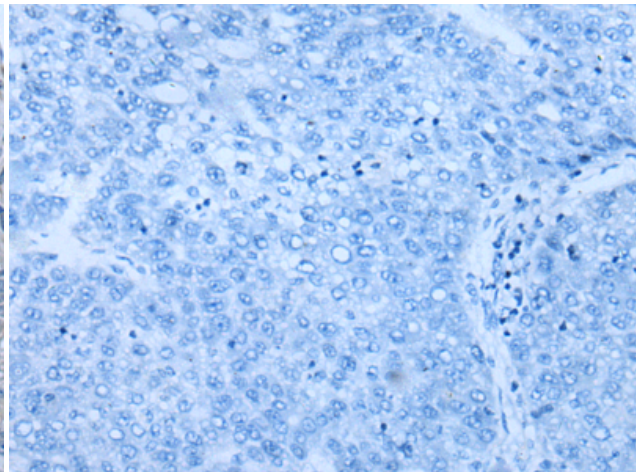
Immunohistochemistry analysis of paraffin embedded Human colorectal cancer tissue using 221509 (ZBTB40 Antibody) at a dilution of 1/20 (Nucleus or Cytoplasm).



In comparison with the IHC on the left, the same paraffin-embedded Human colorectal cancer tissue is first treated with the synthetic peptide and then with 221509 (Anti-ZBTB40 Antibody) at dilution 1/20.



The image on the left is immunohistochemistry of paraffin-embedded Human liver cancer tissue using 221509 (Anti-ZBTB40 Antibody) at a dilution of 1/20.



In comparison with the IHC on the left, the same paraffin-embedded Human liver cancer tissue is first treated with synthetic peptide and then with D263135 (Anti-ZBTB40 Antibody) at dilution 1/20.