

ZBTB6 ? RABBIT PAB

Cat.#: S213318

Product Name: Anti-ZBTB6 Rabbit Polyclonal Antibody

Synonyms: ZID; ZNF482

UNIPROT ID: Q15916 (Gene Accession - NP_006617)

Background: The ZBTB6 protein contains a conserved N-terminal domain known as the POZ domain that inhibits DNA binding. Sequence analysis predicted that the 424-amino acid protein contains 4 C-terminal zinc finger motifs and an N-terminal domain of 120 amino acids found in many different zinc finger proteins and a group of non-zinc finger poxvirus proteins.

Immunogen: Synthetic peptide of human ZBTB6

Applications: ELISA, IHC

Recommended Dilutions: IHC: 50-200; ELISA: 2000-5000

Host Species: Rabbit

Clonality: Rabbit Polyclonal

Isotype: Immunogen-specific rabbit IgG

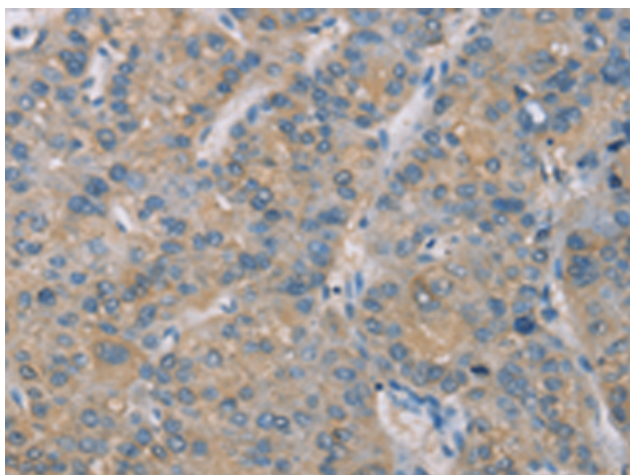
Purification: Antigen affinity purification

Species Reactivity: Human, Mouse

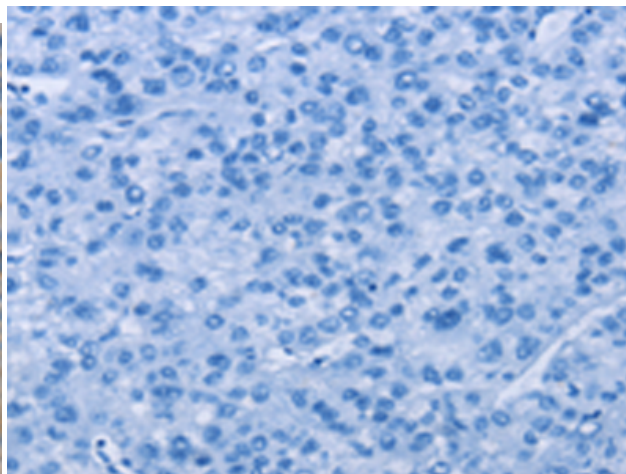
Constituents: PBS (without Mg²⁺ and Ca²⁺), pH 7.4, 150 mM NaCl, 0.05% Sodium Azide and 40% glycerol

Research Areas: Epigenetics and Nuclear Signaling

Storage & Shipping: Store at -20°C. Avoid repeated freezing and thawing



Immunohistochemistry analysis of paraffin embedded Human liver cancer tissue using 213318(ZBTB6 Antibody) at a dilution of 1/50(Cytoplasm).



In comparison with the IHC on the left, the same paraffin-embedded Human liver cancer tissue is first treated with the synthetic peptide and then with 213318(Anti-ZBTB6 Antibody) at dilution 1/50.