

ZBTB7A RABBIT MAB

Cat.#: N263613

Product Name: Anti-ZBTB7A Rabbit Monoclonal Antibody

Synonyms: FBI1; LRF; Pokemon; TIP21; ZBTB7; ZBTB7A; ZNF857A

UNIPROT ID: O95365

Background: Plays a key role in the instruction of early lymphoid progenitors to develop into B lineage by repressing T-cell instructive Notch signals (By similarity).

Immunogen: A synthetic peptide of human ZBTB7A

Applications: WB,IHC-F,IHC-P,ICC/IF,IP

Recommended Dilutions: WB: 1/500-1/1000 IHC: 1/50-1/100 IF: 1/50-1/200 IP: 1/20

Host Species: Rabbit

Clonality: Rabbit Monoclonal

Clone ID: R07-5E0

MW: Calculated MW: 61 kDa; Observed MW: 61 kDa

Isotype: IgG

Purification: Affinity Purified

Species Reactivity: Human

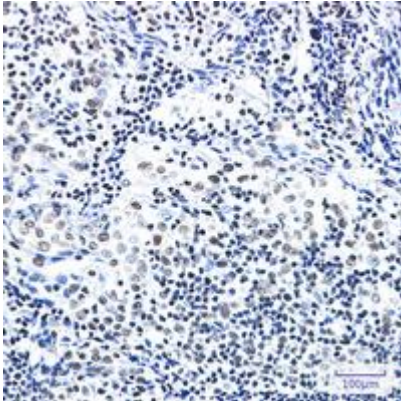
Conjugation: Unconjugated

Modification: Unmodified

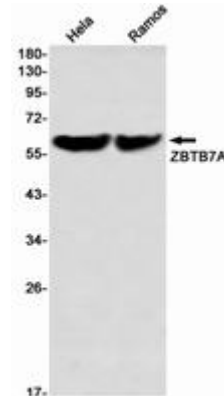
Constituents: PBS (without Mg²⁺ and Ca²⁺), pH 7.3 containing 50% glycerol, 0.5% BSA and 0.02% sodium azide

Research Areas: Epigenetics and Nuclear Signaling

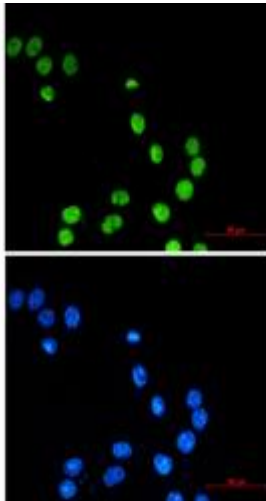
Storage & Shipping: Store at -20°C. Avoid repeated freezing and thawing



Immunohistochemistry analysis of paraffin-embedded Human tonsil using ZBTB7A antibody. High-pressure and temperature Sodium Citrate pH 6.0 was used for antigen retrieval.



Western blot analysis of ZBTB7A in HeLa, Ramos lysates using ZBTB7A antibody.



Immunocytochemistry analysis of ZBTB7A (green) in MCF-7 using ZBTB7A antibody, and DAPI (blue)