

ZC2HC1A RABBIT PAB

Cat.#: S221728

Product Name: Anti-ZC2HC1A Rabbit Polyclonal Antibody

Synonyms: CGI-62; C8orf70; FAM164A

UNIPROT ID: Q96GY0 (Gene Accession - NP_057094)

Background: The function of this protein remains unknown.

Immunogen: Synthetic peptide of human ZC2HC1A

Applications: ELISA, IHC

Recommended Dilutions: IHC: 25-100; ELISA: 5000-10000

Host Species: Rabbit

Clonality: Rabbit Polyclonal

Isotype: Immunogen-specific rabbit IgG

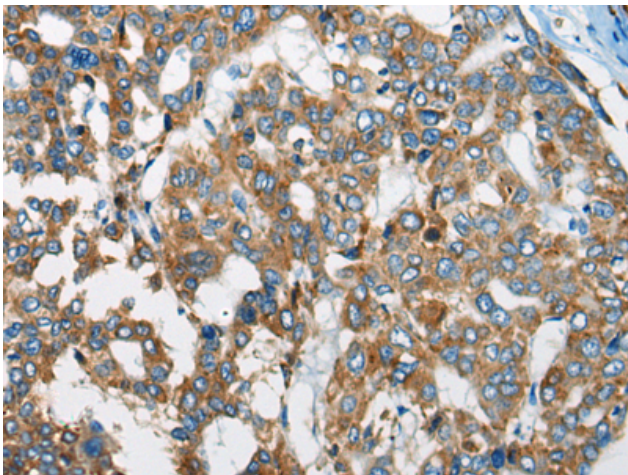
Purification: Antigen affinity purification

Species Reactivity: Human, Mouse

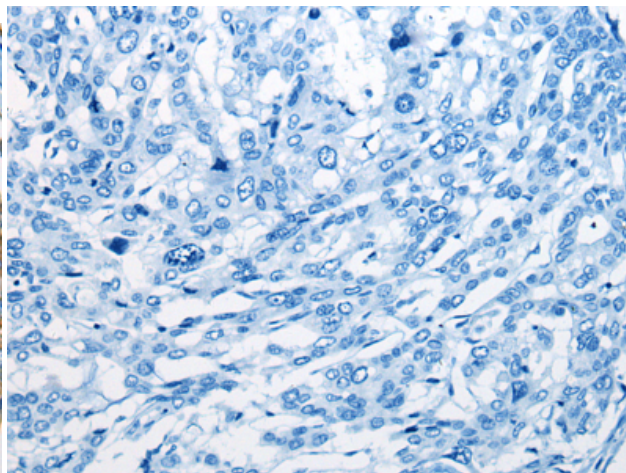
Constituents: PBS (without Mg²⁺ and Ca²⁺), pH 7.4, 150 mM NaCl, 0.05% Sodium Azide and 40% glycerol

Research Areas: Cell Biology

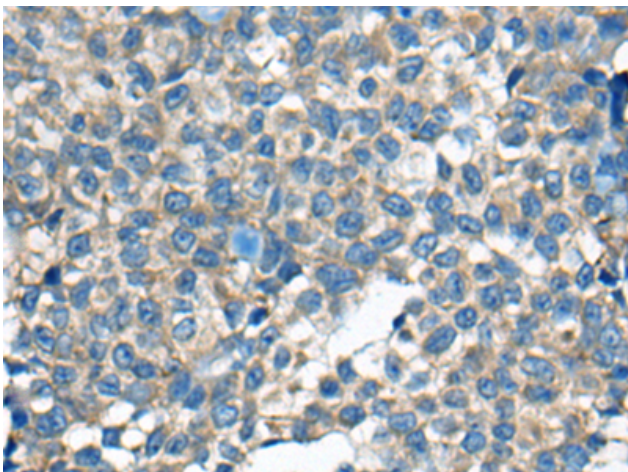
Storage & Shipping: Store at -20°C. Avoid repeated freezing and thawing



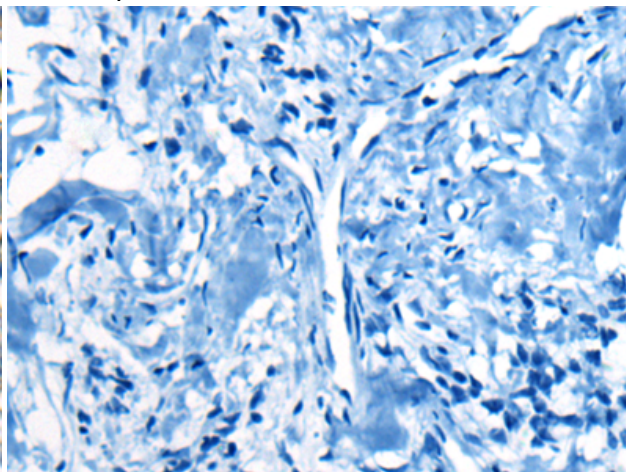
Immunohistochemistry analysis of paraffin embedded Human liver cancer tissue using 221728(ZC2HC1A Antibody) at a dilution of 1/30(Cytoplasm).



In comparison with the IHC on the left, the same paraffin-embedded Human liver cancer tissue is first treated with the synthetic peptide and then with 221728(Anti-ZC2HC1A Antibody) at dilution 1/30.



The image on the left is immunohistochemistry of paraffin-embedded Human ovarian cancer tissue using 221728(Anti-ZC2HC1A Antibody) at a dilution of 1/30.



In comparison with the IHC on the left, the same paraffin-embedded Human ovarian cancer tissue is first treated with synthetic peptide and then with D263442(Anti-ZC2HC1A Antibody) at dilution 1/30.