

## ZDHHC20 RABBIT PAB

**Cat.#:** S218040

**Product Name:** Anti-ZDHHC20 Rabbit Polyclonal Antibody

**Synonyms:** DHHC20; DHHC-20; 4933421L13Rik

**UNIPROT ID:** Q5W0Z9 (Gene Accession - BC110517 )

**Background:** Enables protein-cysteine S-palmitoyltransferase activity and zinc ion binding activity. Involved in peptidyl-L-cysteine S-palmitoylation. Located in intracellular membrane-bounded organelle and plasma membrane. Is integral component of Golgi membrane. [provided by Alliance of Genome Resources, Apr 2022]

**Immunogen:** Fusion protein of human ZDHHC20

**Applications:** ELISA, IHC

**Recommended Dilutions:** IHC: 150-300; ELISA: 5000-10000

**Host Species:** Rabbit

**Clonality:** Rabbit Polyclonal

**Isotype:** Immunogen-specific rabbit IgG

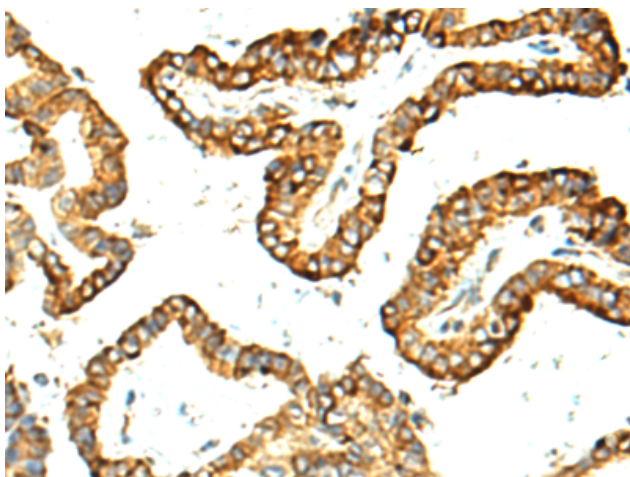
**Purification:** Antigen affinity purification

**Species Reactivity:** Human, Mouse

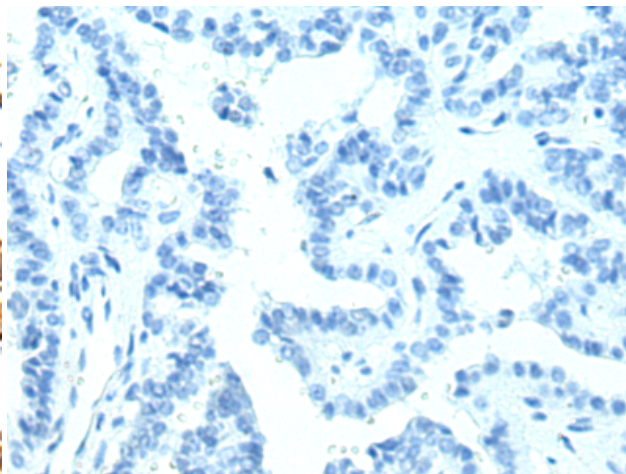
**Constituents:** PBS (without Mg<sup>2+</sup> and Ca<sup>2+</sup>), pH 7.4, 150 mM NaCl, 0.05% Sodium Azide and 40% glycerol

**Research Areas:** Cell Biology

**Storage & Shipping:** Store at -20°C. Avoid repeated freezing and thawing



Immunohistochemistry analysis of paraffin embedded Human thyroid cancer tissue using 218040(ZDHHC20 Antibody) at a dilution of 1/130(Cytoplasm and Cell membrane).



In comparison with the IHC on the left, the same paraffin-embedded Human thyroid cancer tissue is first treated with the fusion protein and then with 218040(Anti-ZDHHC20 Antibody) at dilution 1/130.