

## ZDHHC3 RABBIT PAB

**Cat.#:** S219313

**Product Name:** Anti-ZDHHC3 Rabbit Polyclonal Antibody

**Synonyms:** GODZ; DHHC3; DHHC-3; ZNF373

**UNIPROT ID:** Q9NYG2 (Gene Accession - BC015467 )

**Background:** Palmitoyltransferase with broad specificity (PubMed:21926431, PubMed:23034182). Palmitoylates GABA receptors on their gamma subunit (GABRG1, GABRG2 and GABRG3), which regulates synaptic clustering and/or cell surface stability (By similarity). Palmitoylates glutamate receptors GRIA1 and GRIA2, which leads to their retention in Golgi. May also palmitoylate DLG4, DNAJC5 and SNAP25 (By similarity).

**Immunogen:** Fusion protein of human ZDHHC3

**Applications:** ELISA, IHC

**Recommended Dilutions:** IHC: 50-100; ELISA: 5000-10000

**Host Species:** Rabbit

**Clonality:** Rabbit Polyclonal

**Isotype:** Immunogen-specific rabbit IgG

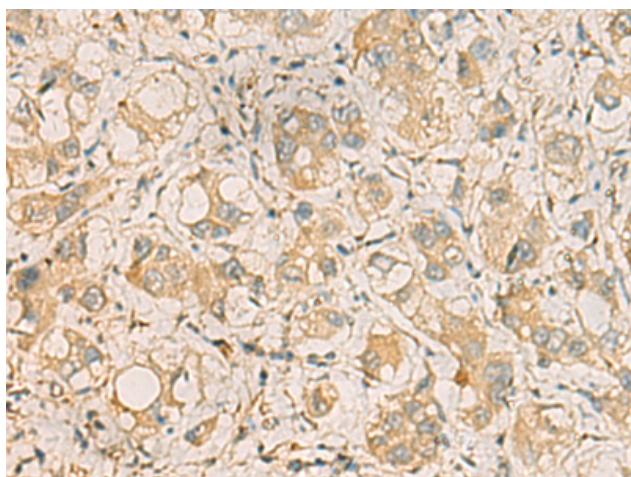
**Purification:** Antigen affinity purification

**Species Reactivity:** Human, Mouse

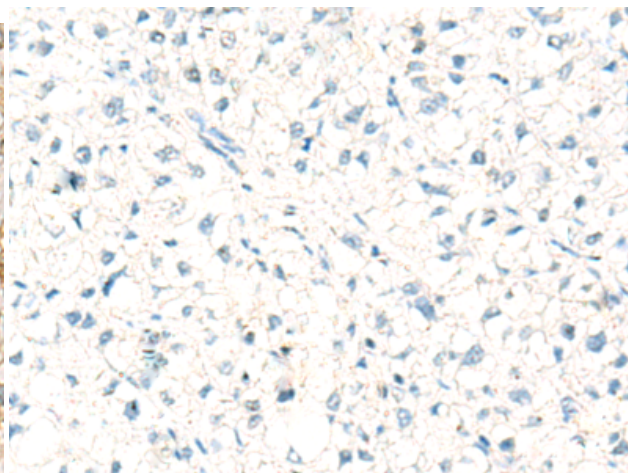
**Constituents:** PBS (without Mg<sup>2+</sup> and Ca<sup>2+</sup>), pH 7.4, 150 mM NaCl, 0.05% Sodium Azide and 40% glycerol

**Research Areas:** Signal Transduction, Neuroscience

**Storage & Shipping:** Store at -20°C. Avoid repeated freezing and thawing



Immunohistochemistry analysis of paraffin embedded Human liver cancer tissue using 219313(ZDHHC3 Antibody) at a dilution of 1/35(Cytoplasm).



In comparison with the IHC on the left, the same paraffin-embedded Human liver cancer tissue is first treated with the fusion protein and then with 219313(Anti-ZDHHC3 Antibody) at dilution 1/35.