

## ZDHHC5 RABBIT PAB

**Cat.#:** S221512

**Product Name:** Anti-ZDHHC5 Rabbit Polyclonal Antibody

**Synonyms:** DHHC5; ZNF375

**UNIPROT ID:** Q9C0B5 (Gene Accession - NP\_056272 )

**Background:** Enables palmitoyltransferase activity. Involved in positive regulation of pattern recognition receptor signaling pathway and positive regulation of protein localization to plasma membrane. Acts upstream of or within protein palmitoylation. Located in phagocytic vesicle and plasma membrane.

**Immunogen:** Synthetic peptide of human ZDHHC5

**Applications:** ELISA, IHC

**Recommended Dilutions:** IHC: 50-200; ELISA: 5000-10000

**Host Species:** Rabbit

**Clonality:** Rabbit Polyclonal

**Isotype:** Immunogen-specific rabbit IgG

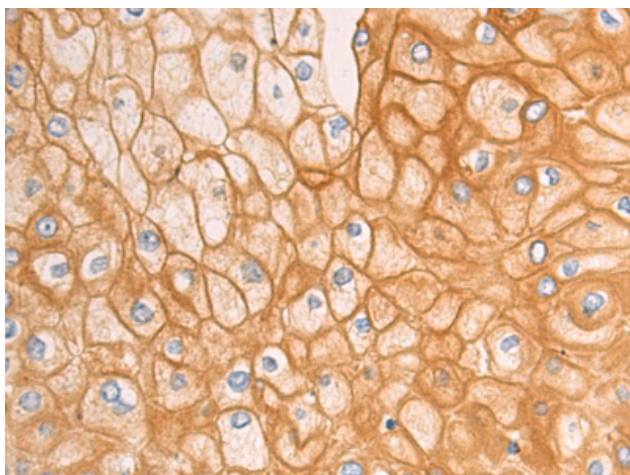
**Purification:** Antigen affinity purification

**Species Reactivity:** Human, Mouse, Rat

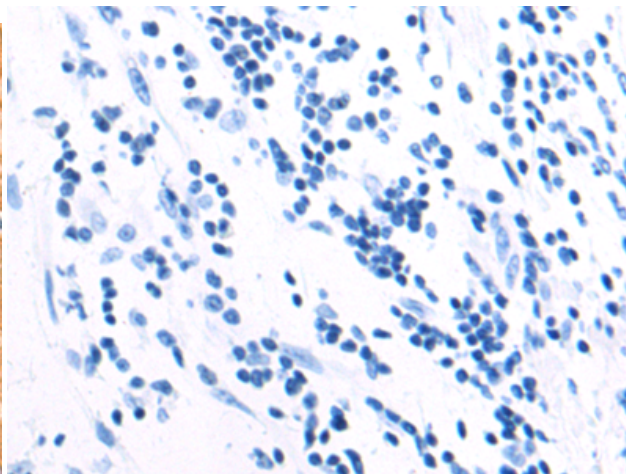
**Constituents:** PBS (without Mg<sup>2+</sup> and Ca<sup>2+</sup>), pH 7.4, 150 mM NaCl, 0.05% Sodium Azide and 40% glycerol

**Research Areas:** Epigenetics and Nuclear Signaling, Cell Biology

**Storage & Shipping:** Store at -20°C. Avoid repeated freezing and thawing



Immunohistochemistry analysis of paraffin embedded Human esophagus cancer tissue using 221512(ZDHHC5 Antibody) at a dilution of 1/50(Cytoplasm and Cell membrane).



In comparison with the IHC on the left, the same paraffin-embedded Human esophagus cancer tissue is first treated with the synthetic peptide and then with 221512(Anti-ZDHHC5 Antibody) at dilution 1/50.