

ZFAND2A RABBIT PAB

Cat.#: S221153

Product Name: Anti-ZFAND2A Rabbit Polyclonal Antibody

Synonyms: AIRAP

UNIPROT ID: Q8N6M9 (Gene Accession - NP_872297)

Background: Predicted to enable zinc ion binding activity. Predicted to be involved in proteasome-mediated ubiquitin-dependent protein catabolic process and protein targeting to ER. Predicted to act upstream of or within cellular response to arsenic-containing substance and positive regulation of proteasomal ubiquitin-dependent protein catabolic process. Predicted to be located in nucleus. Predicted to be part of proteasome complex. Predicted to be active in endoplasmic reticulum. [provided by Alliance of Genome Resources, Apr 2022]

Immunogen: Synthetic peptide of human ZFAND2A

Applications: ELISA, WB, IHC

Recommended Dilutions: IHC: 50-200;WB: 500-2000;ELISA: 5000-10000

Host Species: Rabbit

Clonality: Rabbit Polyclonal

Isotype: Immunogen-specific rabbit IgG

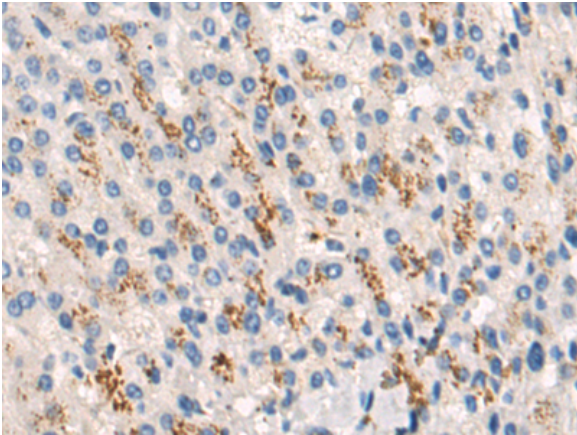
Purification: Antigen affinity purification

Species Reactivity: Human

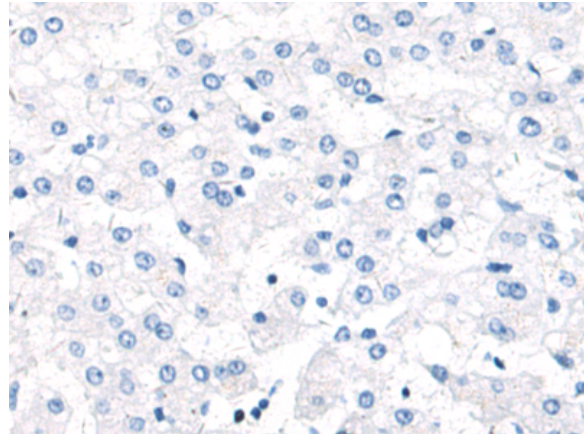
Constituents: PBS (without Mg²⁺ and Ca²⁺), pH 7.4, 150 mM NaCl, 0.05% Sodium Azide and 40% glycerol

Research Areas: Cell Biology

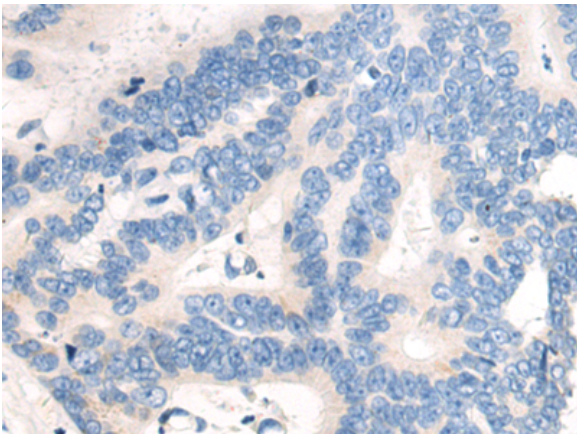
Storage & Shipping: Store at -20°C. Avoid repeated freezing and thawing



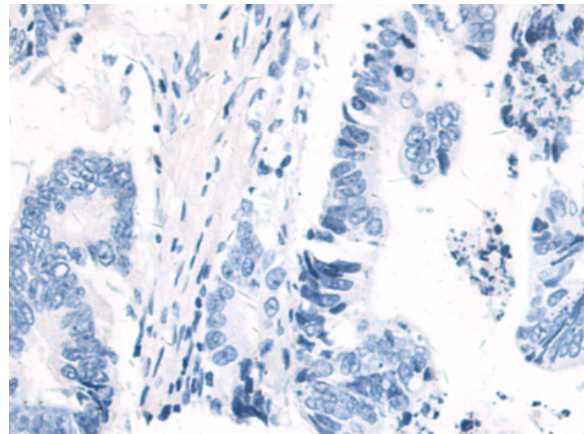
Immunohistochemistry analysis of paraffin embedded Human liver cancer tissue using 221153(ZFAND2A Antibody) at a dilution of 1/50(Cytoplasm).



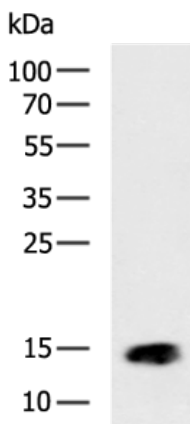
In comparison with the IHC on the left, the same paraffin-embedded Human liver cancer tissue is first treated with the synthetic peptide and then with 221153(Anti-ZFAND2A Antibody) at dilution 1/50.



The image on the left is immunohistochemistry of paraffin-embedded Human colorectal cancer tissue using 221153(Anti-ZFAND2A Antibody) at a dilution of 1/50.



In comparison with the IHC on the left, the same paraffin-embedded Human colorectal cancer tissue is first treated with synthetic peptide and then with D262629(Anti-ZFAND2A Antibody) at dilution 1/50.



Gel: 12%SDS-PAGE, Lysate: 40 µg;
Lane: HepG2 cell lysate;
Primary antibody: 221153(ZFAND2A Antibody) at dilution 1/700;
Secondary antibody: HRP-conjugated Goat anti rabbit IgG at 1/5000 dilution;
Exposure time: 1 minute



Product Description

Pioneering GTPase and Oncogene Product Development since 2010
