

ZFAND2B RABBIT PAB

Cat.#: S221154

Product Name: Anti-ZFAND2B Rabbit Polyclonal Antibody

Synonyms: AIRAPL

UNIPROT ID: Q8WV99 (Gene Accession - NP_620157)

Background: This gene encodes a protein containing AN1-type zinc-fingers and ubiquitin-interacting motifs. The encoded protein likely associates with the proteasome to stimulate the degradation of toxic or misfolded proteins. Alternatively spliced transcript variants encoding multiple isoforms have been observed for this gene.

Immunogen: Synthetic peptide of human ZFAND2B

Applications: ELISA, WB, IHC

Recommended Dilutions: IHC: 50-200;WB: 1000-5000;ELISA: 5000-10000

Host Species: Rabbit

Clonality: Rabbit Polyclonal

Isotype: Immunogen-specific rabbit IgG

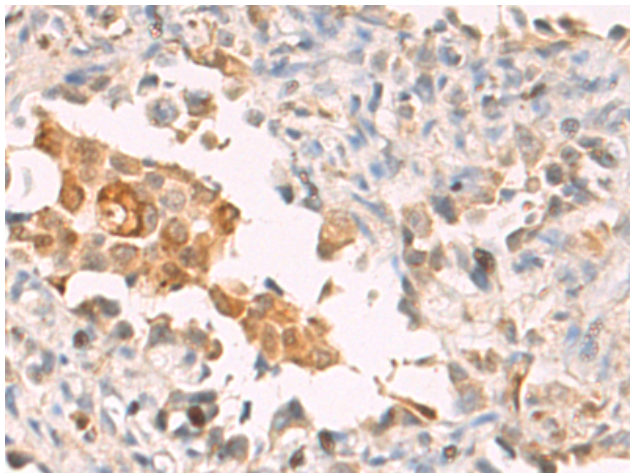
Purification: Antigen affinity purification

Species Reactivity: Human, Mouse, Rat

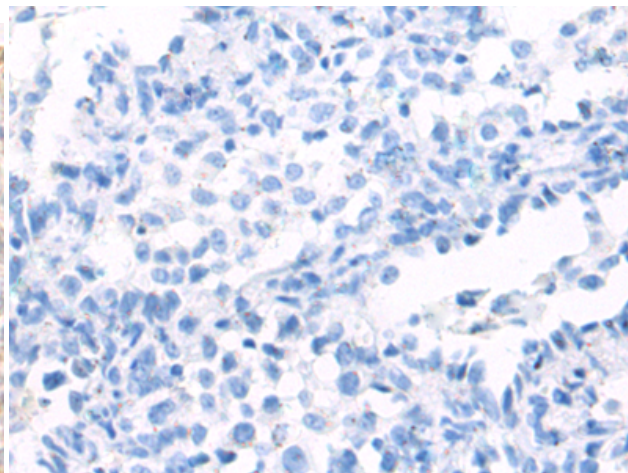
Constituents: PBS (without Mg²⁺ and Ca²⁺), pH 7.4, 150 mM NaCl, 0.05% Sodium Azide and 40% glycerol

Research Areas: Epigenetics and Nuclear Signaling

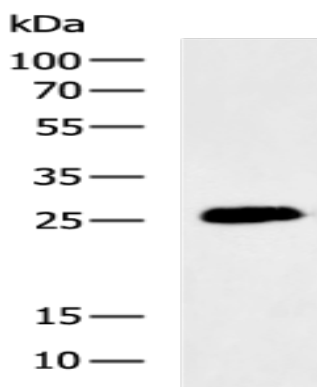
Storage & Shipping: Store at -20°C. Avoid repeated freezing and thawing



Immunohistochemistry analysis of paraffin embedded Human thyroid cancer tissue using 221154(ZFAND2B Antibody) at a dilution of 1/50(Cytoplasm and Nucleus).



In comparison with the IHC on the left, the same paraffin-embedded Human thyroid cancer tissue is first treated with the synthetic peptide and then with 221154(Anti-ZFAND2B Antibody) at dilution 1/50.



Gel: 12%SDS-PAGE, Lysate: 40 µg;
Lane: A172 cell lysate;
Primary antibody: 221154(ZFAND2B Antibody) at dilution 1/1000;
Secondary antibody: HRP-conjugated Goat anti rabbit IgG at 1/5000 dilution;
Exposure time: 30 seconds