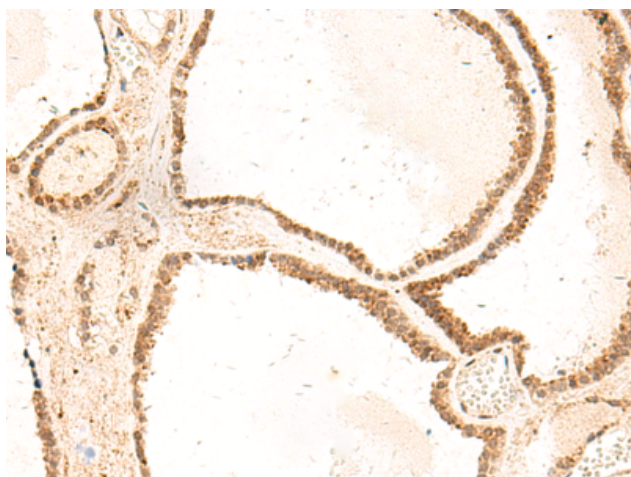
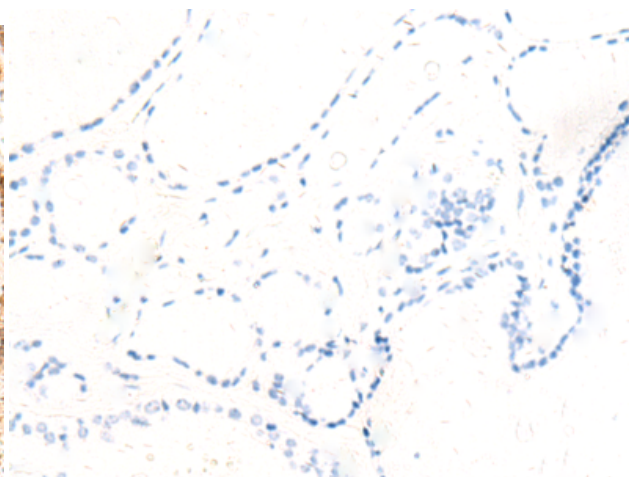


**ZFYVE27 RABBIT PAB****Cat.#:** S219072**Product Name:** Anti-ZFYVE27 Rabbit Polyclonal Antibody**Synonyms:** SPG33; PROTRUDIN**UNIPROT ID:** Q5T4F4 (Gene Accession - BC030621 )**Background:** This gene encodes a protein with several transmembrane domains, a Rab11-binding domain and a lipid-binding FYVE finger domain. The encoded protein appears to promote neurite formation. A mutation in this gene has been reported to be associated with hereditary spastic paraplegia, however the pathogenicity of the mutation, which may simply represent a polymorphism, is unclear.**Immunogen:** Fusion protein of human ZFYVE27**Applications:** ELISA, IHC**Recommended Dilutions:** IHC: 50–300; ELISA: 5000–10000**Host Species:** Rabbit**Clonality:** Rabbit Polyclonal**Isotype:** Immunogen-specific rabbit IgG**Purification:** Antigen affinity purification**Species Reactivity:** Human, Mouse, Rat**Constituents:** PBS (without Mg<sup>2+</sup> and Ca<sup>2+</sup>), pH 7.4, 150 mM NaCl, 0.05% Sodium Azide and 40% glycerol**Research Areas:** Neuroscience**Storage & Shipping:** Store at -20°C. Avoid repeated freezing and thawing

Immunohistochemistry analysis of paraffin embedded Human thyroid cancer tissue using 219072(ZFYVE27 Antibody) at a dilution of 1/50(Cytoplasm and Nucleus).



In comparison with the IHC on the left, the same paraffin-embedded Human thyroid cancer tissue is first treated with the fusion protein and then with 219072(Anti-ZFYVE27 Antibody) at dilution 1/50.