

## ZHX3 ? RABBIT PAB

**Cat.#:** S213325

**Product Name:** Anti-ZHX3 Rabbit Polyclonal Antibody

**Synonyms:** TIX1

**UNIPROT ID:** Q9H4I2 (Gene Accession - NP\_055850 )

**Background:** This gene encodes a member of the zinc fingers and homeoboxes (ZHX) gene family. The encoded protein contains two C2H2-type zinc fingers and five homeodomains and forms a dimer with itself or with zinc fingers and homeoboxes family member 1. In the nucleus, the dimerized protein interacts with the A subunit of the ubiquitous transcription factor nuclear factor- $\kappa$ B and may function as a transcriptional repressor.

**Immunogen:** Synthetic peptide of human ZHX3

**Applications:** ELISA, IHC

**Recommended Dilutions:** IHC: 50-200; ELISA: 2000-5000

**Host Species:** Rabbit

**Clonality:** Rabbit Polyclonal

**Isotype:** Immunogen-specific rabbit IgG

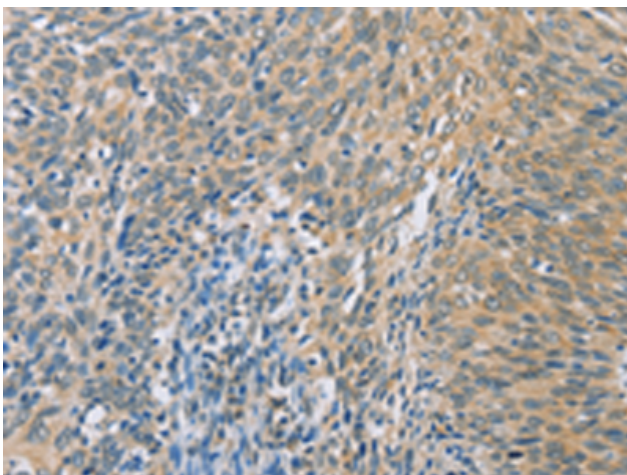
**Purification:** Antigen affinity purification

**Species Reactivity:** Human, Mouse

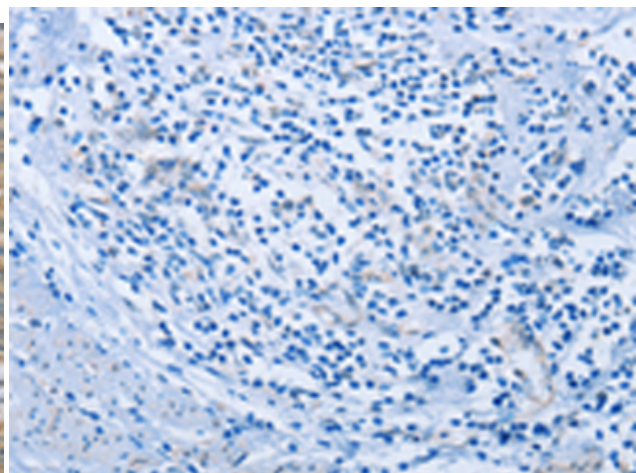
**Constituents:** PBS (without Mg<sup>2+</sup> and Ca<sup>2+</sup>), pH 7.4, 150 mM NaCl, 0.05% Sodium Azide and 40% glycerol

**Research Areas:** Epigenetics and Nuclear Signaling

**Storage & Shipping:** Store at -20°C. Avoid repeated freezing and thawing



Immunohistochemistry analysis of paraffin embedded Human cervical cancer tissue using 213325(ZHX3 Antibody) at a dilution of 1/100(Cytoplasm ).



In comparison with the IHC on the left, the same paraffin-embedded Human cervical cancer tissue is first treated with the synthetic peptide and then with 213325(Anti-ZHX3 Antibody) at dilution 1/100.