

## ZIC1 RABBIT PAB

**Cat.#:** S221513

**Product Name:** Anti-ZIC1 Rabbit Polyclonal Antibody

**Synonyms:** ZIC; ZNF201

**UNIPROT ID:** Q15915 (Gene Accession - NP\_003403 )

**Background:** This gene encodes a member of the ZIC family of C2H2-type zinc finger proteins. Members of this family are important during development. Aberrant expression of this gene is seen in medulloblastoma, a childhood brain tumor. This gene is closely linked to the gene encoding zinc finger protein of the cerebellum 4, a related family member on chromosome 3. This gene encodes a transcription factor that can bind and transactivate the apolipoprotein E gene.

**Immunogen:** Synthetic peptide of human ZIC1

**Applications:** ELISA, IHC

**Recommended Dilutions:** IHC: 40-250; ELISA: 5000-10000

**Host Species:** Rabbit

**Clonality:** Rabbit Polyclonal

**Isotype:** Immunogen-specific rabbit IgG

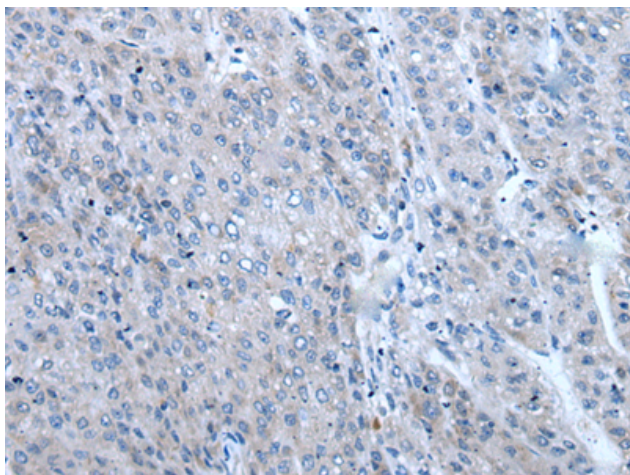
**Purification:** Antigen affinity purification

**Species Reactivity:** Human, Mouse

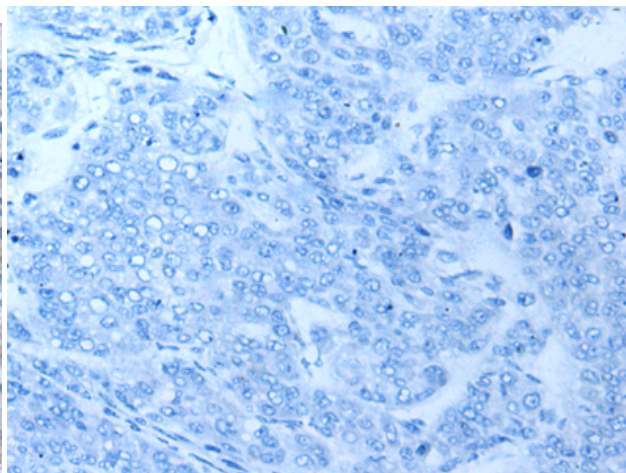
**Constituents:** PBS (without Mg<sup>2+</sup> and Ca<sup>2+</sup>), pH 7.4, 150 mM NaCl, 0.05% Sodium Azide and 40% glycerol

**Research Areas:** Epigenetics and Nuclear Signaling, Neuroscience

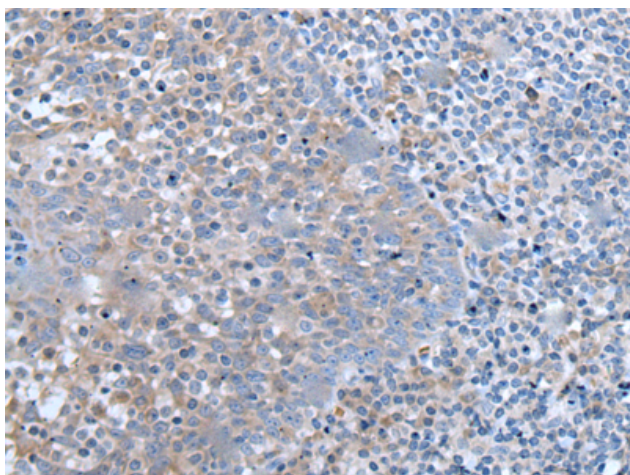
**Storage & Shipping:** Store at -20°C. Avoid repeated freezing and thawing



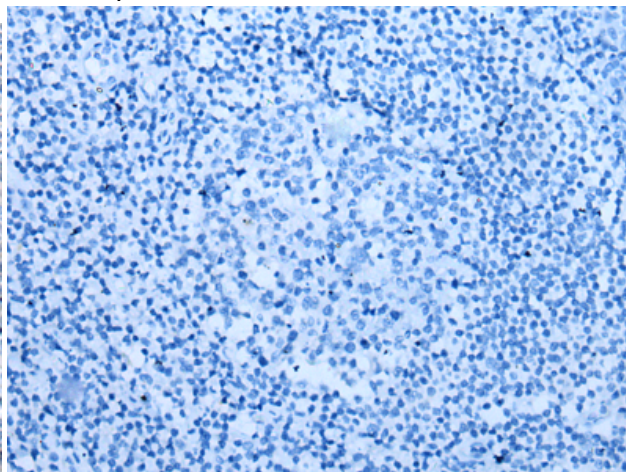
Immunohistochemistry analysis of paraffin embedded Human liver cancer tissue using 221513(ZIC1 Antibody) at a dilution of 1/65(Cytoplasm).



In comparison with the IHC on the left, the same paraffin-embedded Human liver cancer tissue is first treated with the synthetic peptide and then with 221513(Anti-ZIC1 Antibody) at dilution 1/65.



The image on the left is immunohistochemistry of paraffin-embedded Human tonsil tissue using 221513(Anti-ZIC1 Antibody) at a dilution of 1/65.



In comparison with the IHC on the left, the same paraffin-embedded Human tonsil tissue is first treated with synthetic peptide and then with D263139(Anti-ZIC1 Antibody) at dilution 1/65.