

ZIC3 ? RABBIT PAB

Cat.#: S213327

Product Name: Anti-ZIC3 Rabbit Polyclonal Antibody

Synonyms: HTX; HTX1; ZNF203; VACTERLX

UNIPROT ID: O60481 (Gene Accession - NP_003404)

Background: This gene encodes a member of the ZIC family of C2H2-type zinc finger proteins. This nuclear protein probably functions as a transcription factor in early stages of left-right body axis formation. Mutations in this gene cause X-linked visceral heterotaxy, which includes congenital heart disease and left-right axis defects in organs.

Immunogen: Synthetic peptide of human ZIC3

Applications: ELISA, WB, IHC

Recommended Dilutions: IHC: 100-300;WB: 200-1000;ELISA: 1000-2000

Host Species: Rabbit

Clonality: Rabbit Polyclonal

Isotype: Immunogen-specific rabbit IgG

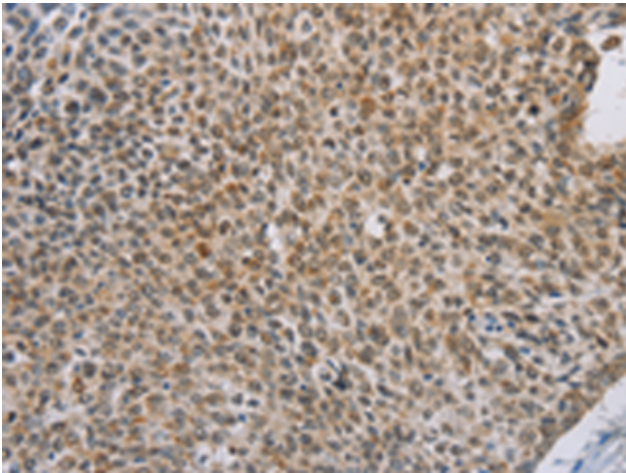
Purification: Antigen affinity purification

Species Reactivity: Human, Mouse

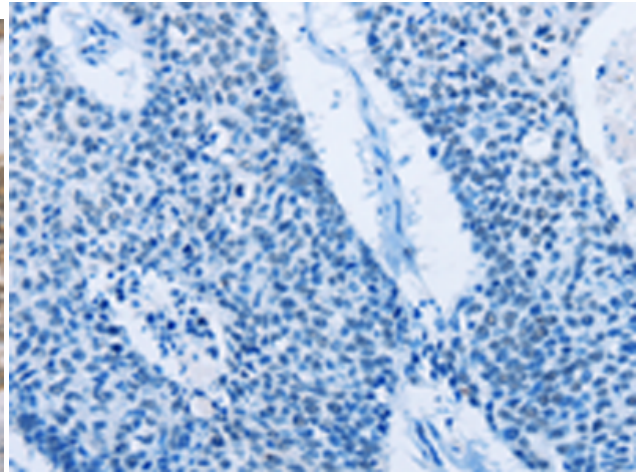
Constituents: PBS (without Mg²⁺ and Ca²⁺), pH 7.4, 150 mM NaCl, 0.05% Sodium Azide and 40% glycerol

Research Areas: Epigenetics and Nuclear Signaling, Stem Cells, Developmental Biology

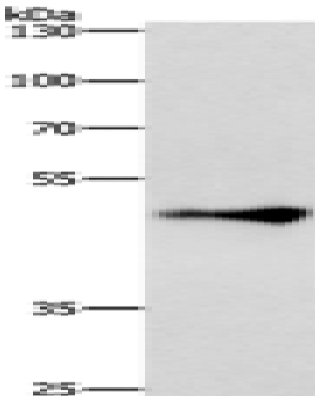
Storage & Shipping: Store at -20°C. Avoid repeated freezing and thawing



Immunohistochemistry analysis of paraffin embedded Human lung cancer tissue using 213327(ZIC3 Antibody) at a dilution of 1/100(Nucleus).



In comparison with the IHC on the left, the same paraffin-embedded Human lung cancer tissue is first treated with the synthetic peptide and then with 213327(Anti-ZIC3 Antibody) at dilution 1/100.



Gel: 8%SDS-PAGE, Lysate: 40 μ g;
Lane: HepG2 cells;
Primary antibody: 213327(ZIC3 Antibody) at dilution 1/500;
Secondary antibody: Goat anti rabbit IgG at 1/8000 dilution;
Exposure time: 30 seconds