

## ZKSCAN3 RABBIT PAB

**Cat.#:** S218231

**Product Name:** Anti-ZKSCAN3 Rabbit Polyclonal Antibody

**Synonyms:** ZF47; Zfp47; ZFP306; ZNF306; ZNF309; zfp-47; ZSCAN13; ZSCAN35; dJ874C20.1; dJ874C20.1

**UNIPROT ID:** Q9BRR0 (Gene Accession - BC006118 )

**Background:** Transcriptional factor that binds to the consensus sequence 5'-[GT][AG][AGT]GGGG-3' and acts as a repressor of autophagy. Specifically represses expression of genes involved in autophagy and lysosome biogenesis/function such as MAP1LC3B, ULK1 or WIPI2. Associates with chromatin at the ITGB4 and VEGF promoters. Also acts as a transcription activator and promotes cancer cell progression and/or migration in various tumors and myelomas.

**Immunogen:** Fusion protein of human ZKSCAN3

**Applications:** ELISA, WB, IHC

**Recommended Dilutions:** IHC: 50-200;WB: 500-2000;ELISA: 5000-10000

**Host Species:** Rabbit

**Clonality:** Rabbit Polyclonal

**Isotype:** Immunogen-specific rabbit IgG

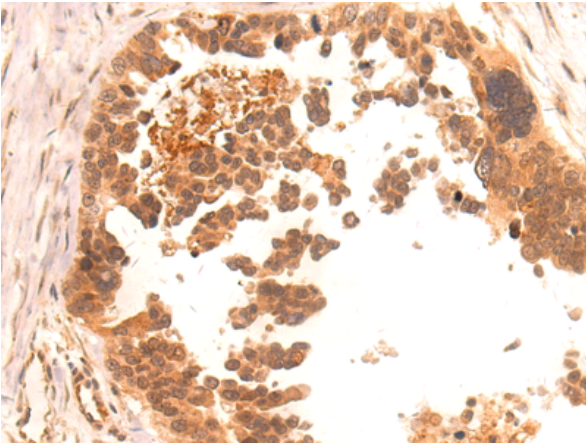
**Purification:** Antigen affinity purification

**Species Reactivity:** Human, Mouse

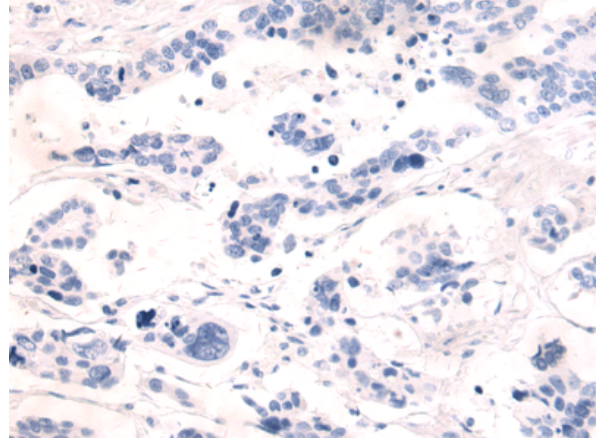
**Constituents:** PBS (without Mg<sup>2+</sup> and Ca<sup>2+</sup>), pH 7.4, 150 mM NaCl, 0.05% Sodium Azide and 40% glycerol

**Research Areas:** Epigenetics and Nuclear Signaling

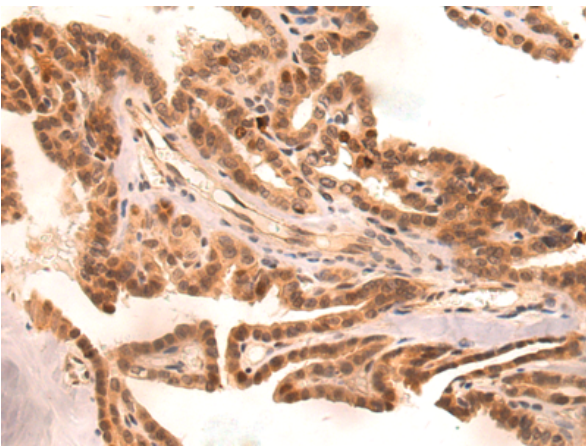
**Storage & Shipping:** Store at -20°C. Avoid repeated freezing and thawing



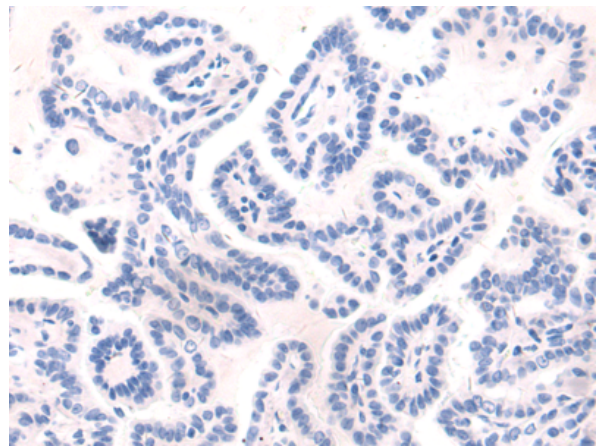
Immunohistochemistry analysis of paraffin embedded Human colorectal cancer tissue using 218231(ZKSCAN3 Antibody) at a dilution of 1/90(Cytoplasm, Nucleus).



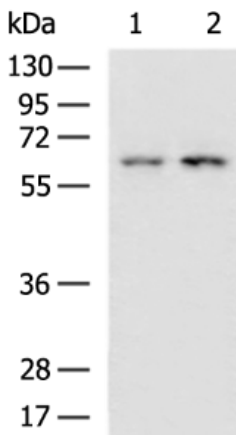
In comparison with the IHC on the left, the same paraffin-embedded Human colorectal cancer tissue is first treated with the fusion protein and then with 218231(Anti-ZKSCAN3 Antibody) at dilution 1/90.



The image on the left is immunohistochemistry of paraffin-embedded Human thyroid cancer tissue using 218231(Anti-ZKSCAN3 Antibody) at a dilution of 1/90.



In comparison with the IHC on the left, the same paraffin-embedded Human thyroid cancer tissue is first treated with fusion protein and then with D223990(Anti-ZKSCAN3 Antibody) at dilution 1/90.



Gel: 8%SDS-PAGE, Lysate: 40 µg;  
Lane 1-2: Hela cell, Mouse spleen tissue lysates;  
Primary antibody: 218231(ZKSCAN3 Antibody) at dilution 1/1000;  
Secondary antibody: HRP-conjugated Goat anti rabbit IgG at 1/5000 dilution;  
Exposure time: 1 minute



# Product Description

Pioneering GTPase and Oncogene Product Development since 2010

---