

## ZMAT2 RABBIT PAB

**Cat.#:** S211973

**Product Name:** Anti-ZMAT2 Rabbit Polyclonal Antibody

**Synonyms:** Snu23; Ptg-12; hSNU23

**UNIPROT ID:** Q96NC0 (Gene Accession - BC056668 )

**Background:** The function of ZMAT2 remains unknown.

**Immunogen:** Full length fusion protein

**Applications:** ELISA, WB, IHC

**Recommended Dilutions:** IHC: 30-150;WB: 200-1000;ELISA: 5000-10000

**Host Species:** Rabbit

**Clonality:** Rabbit Polyclonal

**Isotype:** Immunogen-specific rabbit IgG

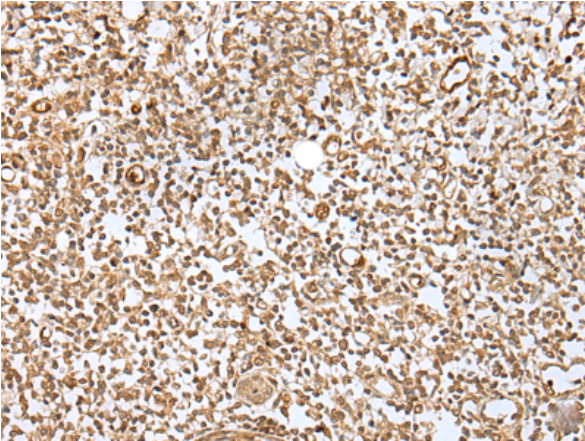
**Purification:** Antigen affinity purification

**Species Reactivity:** Human, Mouse

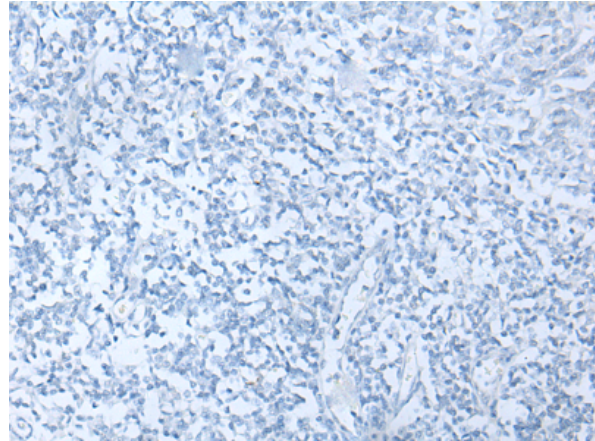
**Constituents:** PBS (without Mg<sup>2+</sup> and Ca<sup>2+</sup>), pH 7.4, 150 mM NaCl, 0.05% Sodium Azide and 40% glycerol

**Research Areas:** Epigenetics and Nuclear Signaling

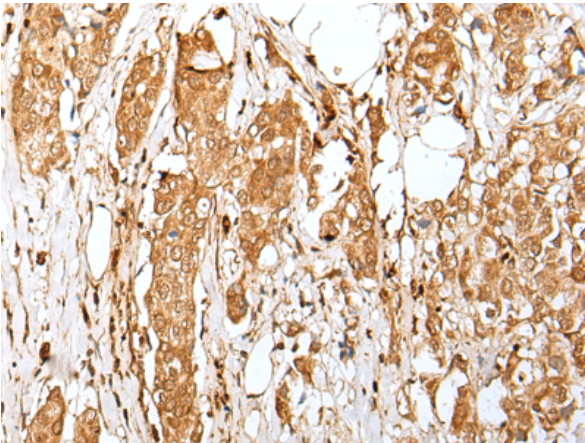
**Storage & Shipping:** Store at -20°C. Avoid repeated freezing and thawing



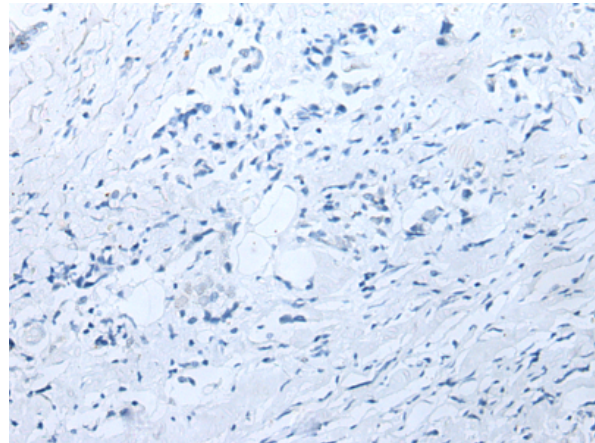
Immunohistochemistry analysis of paraffin embedded Human tonsil tissue using 211973(ZMAT2 Antibody) at a dilution of 1/40(Cytoplasm and Nucleus).



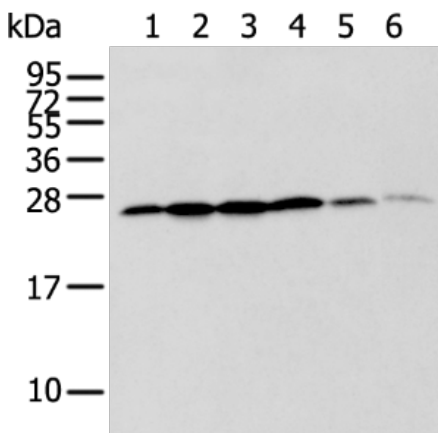
In comparison with the IHC on the left, the same paraffin-embedded Human tonsil tissue is first treated with the fusion protein and then with 211973(Anti-ZMAT2 Antibody) at dilution 1/40.



The image on the left is immunohistochemistry of paraffin-embedded Human breast cancer tissue using 211973(Anti-ZMAT2 Antibody) at a dilution of 1/40.



In comparison with the IHC on the left, the same paraffin-embedded Human breast cancer tissue is first treated with fusion protein and then with D123991(Anti-ZMAT2 Antibody) at dilution 1/40.



Gel: 12%SDS-PAGE, Lysate: 40 µg;  
Lane 1-6: Jurkat, 231, Hela, k562 and A172 cell,  
Mouse brain tissue lysates;  
Primary antibody: 211973(ZMAT2 Antibody) at  
dilution 1/200;  
Secondary antibody: Goat anti rabbit IgG at  
1/8000 dilution;  
Exposure time: 3 seconds



# Product Description

Pioneering GTPase and Oncogene Product Development since 2010

---