

ZMIZ1 RABBIT PAB

Cat.#: S220852

Product Name: Anti-ZMIZ1 Rabbit Polyclonal Antibody

Synonyms: MIZ; RAI17; ZIMP10; hZIMP10; TRAFIP10

UNIPROT ID: Q9ULJ6 (Gene Accession - NP_065071)

Background: This gene encodes a member of the PIAS (protein inhibitor of activated STAT) family of proteins. The encoded protein regulates the activity of various transcription factors, including the androgen receptor, Smad3/4, and p53. The encoded protein may also play a role in sumoylation. A translocation between this locus on chromosome 10 and the protein tyrosine kinase ABL1 locus on chromosome 9 has been associated with acute lymphoblastic leukemia.

Immunogen: Synthetic peptide of human ZMIZ1

Applications: ELISA, WB, IHC

Recommended Dilutions: IHC: 25-100;WB: 200-1000;ELISA: 1000-2000

Host Species: Rabbit

Clonality: Rabbit Polyclonal

Isotype: Immunogen-specific rabbit IgG

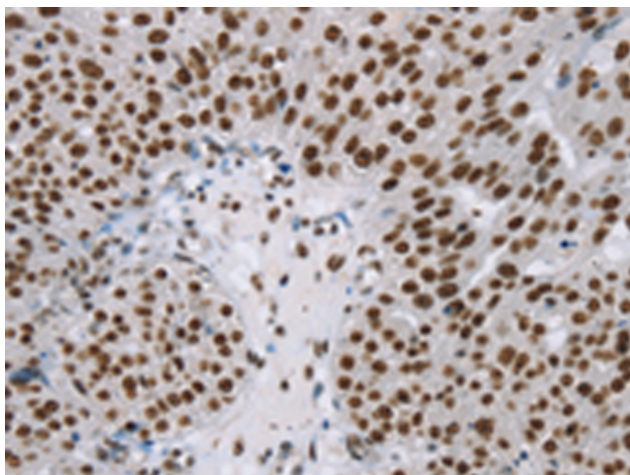
Purification: Antigen affinity purification

Species Reactivity: Human, Mouse

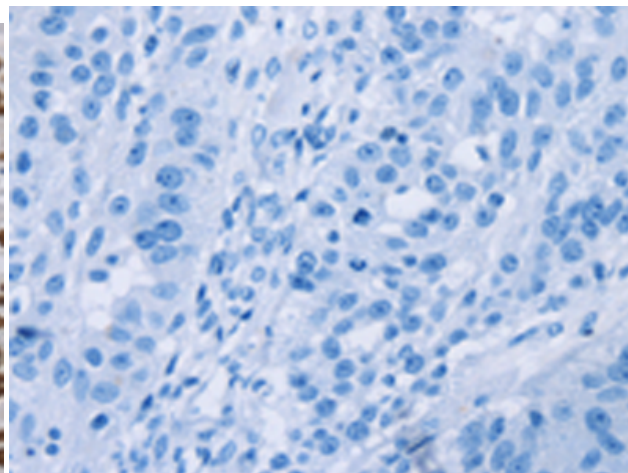
Constituents: PBS (without Mg²⁺ and Ca²⁺), pH 7.4, 150 mM NaCl, 0.05% Sodium Azide and 40% glycerol

Research Areas: Signal Transduction, Epigenetics and Nuclear Signaling, Cancer

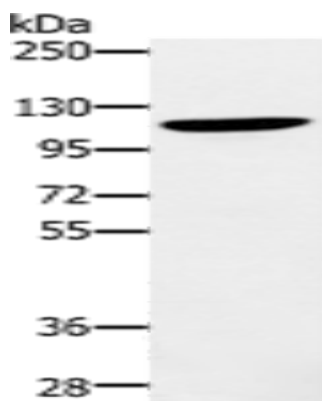
Storage & Shipping: Store at -20°C. Avoid repeated freezing and thawing



Immunohistochemistry analysis of paraffin embedded Human breast cancer tissue using 220852(ZMIZ1 Antibody) at a dilution of 1/20(Cytoplasm or Nucleus).



In comparison with the IHC on the left, the same paraffin-embedded Human breast cancer tissue is first treated with the synthetic peptide and then with 220852(Anti-ZMIZ1 Antibody) at dilution 1/20.



Gel: 6%SDS-PAGE, Lysate: 40 μ g;
Lane: 293T cells;
Primary antibody: 220852(ZMIZ1 Antibody) at dilution 1/200;
Secondary antibody: Goat anti rabbit IgG at 1/8000 dilution;
Exposure time: 2 minutes