

## ZNF143 RABBIT PAB

**Cat.#:** S221515

**Product Name:** Anti-ZNF143 Rabbit Polyclonal Antibody

**Synonyms:** SBF; STAF; pHZ-1

**UNIPROT ID:** P52747 (Gene Accession - NP\_003433 )

**Background:** Enables DNA-binding transcription activator activity, RNA polymerase II-specific and RNA polymerase II cis-regulatory region sequence-specific DNA binding activity. Involved in positive regulation of snRNA transcription by RNA polymerase II. Predicted to be located in nucleoplasm. [provided by Alliance of Genome Resources, Apr 2022]

**Immunogen:** Synthetic peptide of human ZNF143

**Applications:** ELISA, IHC

**Recommended Dilutions:** IHC: 50-200; ELISA: 5000-10000

**Host Species:** Rabbit

**Clonality:** Rabbit Polyclonal

**Isotype:** Immunogen-specific rabbit IgG

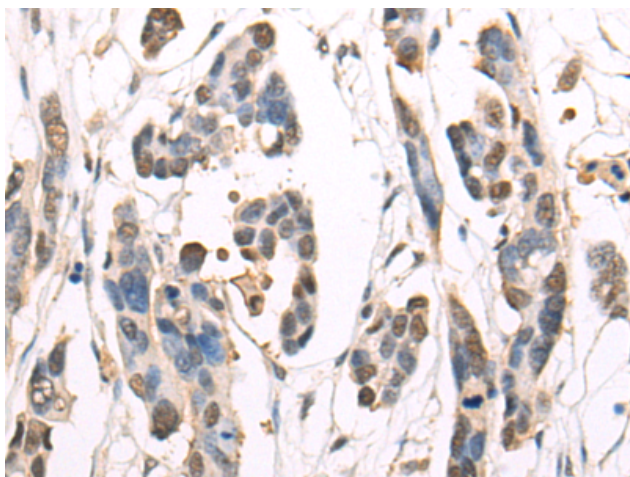
**Purification:** Antigen affinity purification

**Species Reactivity:** Human, Mouse, Rat

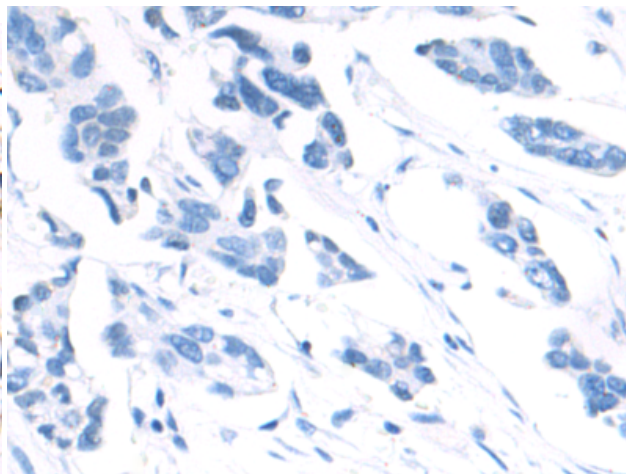
**Constituents:** PBS (without Mg<sup>2+</sup> and Ca<sup>2+</sup>), pH 7.4, 150 mM NaCl, 0.05% Sodium Azide and 40% glycerol

**Research Areas:** Epigenetics and Nuclear Signaling

**Storage & Shipping:** Store at -20°C. Avoid repeated freezing and thawing



Immunohistochemistry analysis of paraffin embedded Human colorectal cancer tissue using 221515(ZNF143 Antibody) at a dilution of 1/50(Nucleus).



In comparison with the IHC on the left, the same paraffin-embedded Human colorectal cancer tissue is first treated with the synthetic peptide and then with 221515(Anti-ZNF143 Antibody) at dilution 1/50.