

ZNF184 RABBIT PAB

Cat.#: S219523

Product Name: Anti-ZNF184 Rabbit Polyclonal Antibody

Synonyms: kr-ZNF3

UNIPROT ID: Q99676 (Gene Accession - BC022992)

Background: The protein encoded by this gene is predicted to be a Kruppel C2H2-type zinc-finger protein family member. Sequence analysis predicts that the protein contains two Kruppel associated box (KRAB) boxes in the N-terminus and highly conserved zinc finger motifs at the C-terminus. Alternative splicing results in multiple transcript variants.

Immunogen: Fusion protein of human ZNF184

Applications: ELISA, WB, IHC

Recommended Dilutions: IHC: 100-300;WB: 1000-5000;ELISA: 5000-10000

Host Species: Rabbit

Clonality: Rabbit Polyclonal

Isotype: Immunogen-specific rabbit IgG

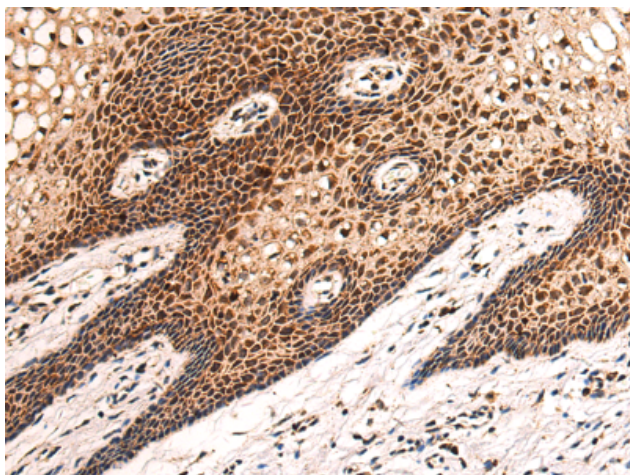
Purification: Antigen affinity purification

Species Reactivity: Human, Rat

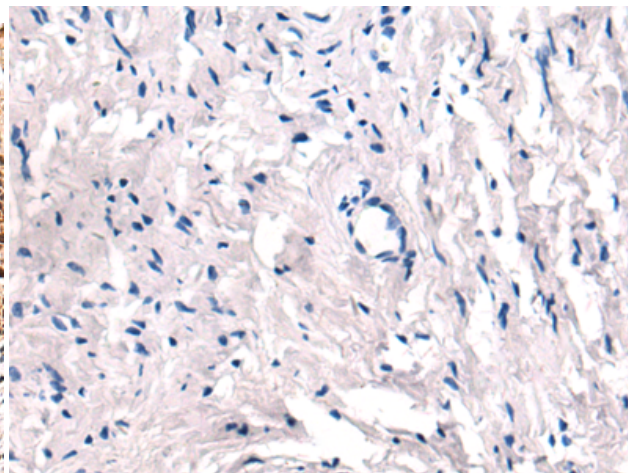
Constituents: PBS (without Mg²⁺ and Ca²⁺), pH 7.4, 150 mM NaCl, 0.05% Sodium Azide and 40% glycerol

Research Areas: Epigenetics and Nuclear Signaling

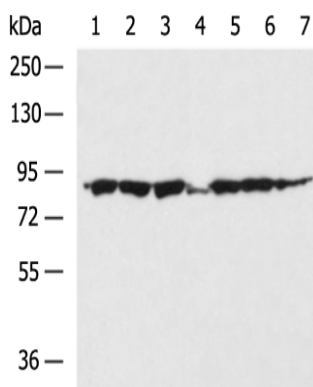
Storage & Shipping: Store at -20°C. Avoid repeated freezing and thawing



Immunohistochemistry analysis of paraffin embedded Human cervical cancer tissue using 219523(ZNF184 Antibody) at a dilution of 1/105(Nucleus).



In comparison with the IHC on the left, the same paraffin-embedded Human cervical cancer tissue is first treated with the fusion protein and then with 219523(Anti-ZNF184 Antibody) at dilution 1/105.



Gel: 6%SDS-PAGE, Lysate: 40 µg;
 Lane 1-7: RAMOS, Raji, A375 cell, Rat liver tissue,
 LO2, 293T, Jurkat cell lysates;
 Primary antibody: 219523(ZNF184 Antibody) at
 dilution 1/1000;
 Secondary antibody: HRP-conjugated Goat
 anti rabbit IgG at 1/5000 dilution;
 Exposure time: 2 minutes