

## ZNF200 RABBIT PAB

**Cat.#:** S214928

**Product Name:** Anti-ZNF200 Rabbit Polyclonal Antibody

**Synonyms:**

**UNIPROT ID:** P98182 (Gene Accession - NP\_003445 )

**Background:** Could have a role in spermatogenesis.

**Immunogen:** Synthetic peptide of human ZNF200

**Applications:** ELISA, IHC

**Recommended Dilutions:** IHC: 25-100; ELISA: 2000-5000

**Host Species:** Rabbit

**Clonality:** Rabbit Polyclonal

**Isotype:** Immunogen-specific rabbit IgG

**Purification:** Antigen affinity purification

**Species Reactivity:** Human

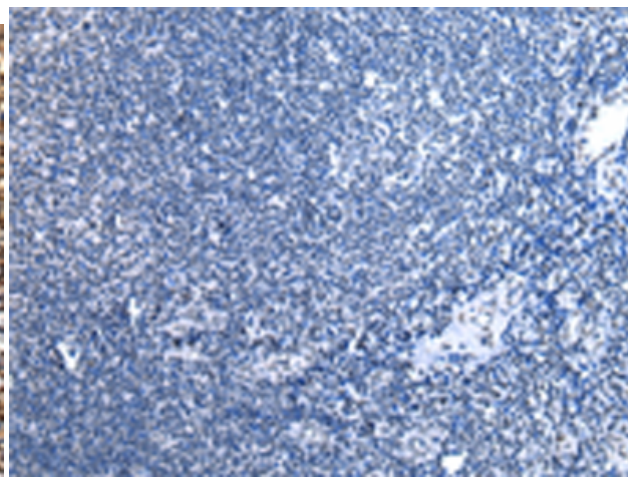
**Constituents:** PBS (without Mg<sup>2+</sup> and Ca<sup>2+</sup>), pH 7.4, 150 mM NaCl, 0.05% Sodium Azide and 40% glycerol

**Research Areas:** Epigenetics and Nuclear Signaling

**Storage & Shipping:** Store at -20°C. Avoid repeated freezing and thawing



Immunohistochemistry analysis of paraffin embedded Human tonsil tissue using 214928(ZNF200 Antibody) at a dilution of 1/30(Cytoplasm and Nucleus).



In comparison with the IHC on the left, the same paraffin-embedded Human tonsil tissue is first treated with the synthetic peptide and then with 214928(Anti-ZNF200 Antibody) at dilution 1/30.