

## ZNF213 RABBIT PAB

**Cat.#:** S218236

**Product Name:** Anti-ZNF213 Rabbit Polyclonal Antibody

**Synonyms:** CR53; ZSCAN53; ZKSCAN21

**UNIPROT ID:** O14771 (Gene Accession - BC007287 )

**Background:** C2H2 zinc finger proteins, such as ZNF213, have bipartite structures in which one domain binds DNA or RNA and the other modulates target gene expression.[supplied by OMIM, Apr 2004]

**Immunogen:** Fusion protein of human ZNF213

**Applications:** ELISA, IHC

**Recommended Dilutions:** IHC: 100-300; ELISA: 5000-10000

**Host Species:** Rabbit

**Clonality:** Rabbit Polyclonal

**Isotype:** Immunogen-specific rabbit IgG

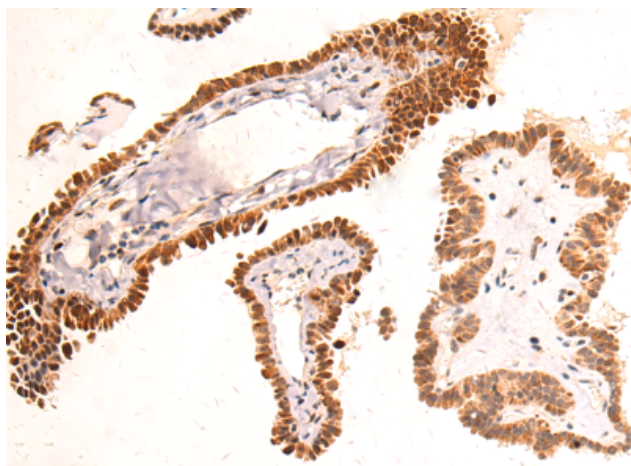
**Purification:** Antigen affinity purification

**Species Reactivity:** Human

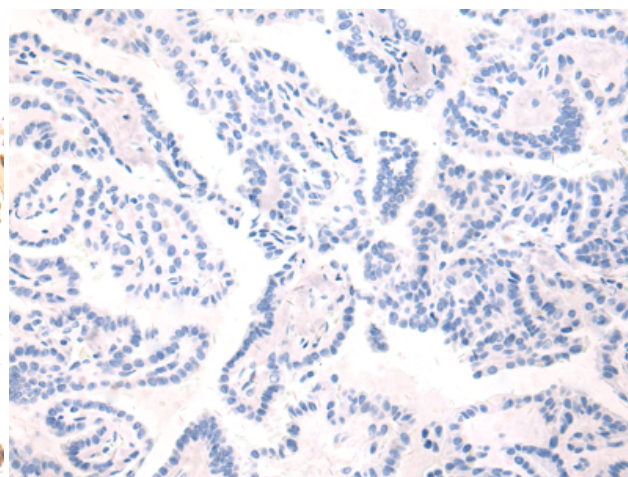
**Constituents:** PBS (without Mg<sup>2+</sup> and Ca<sup>2+</sup>), pH 7.4, 150 mM NaCl, 0.05% Sodium Azide and 40% glycerol

**Research Areas:** Epigenetics and Nuclear Signaling

**Storage & Shipping:** Store at -20°C. Avoid repeated freezing and thawing



Immunohistochemistry analysis of paraffin embedded Human thyroid cancer tissue using 218236(ZNF213 Antibody) at a dilution of 1/125(Nucleus).



In comparison with the IHC on the left, the same paraffin-embedded Human thyroid cancer tissue is first treated with the fusion protein and then with 218236(Anti-ZNF213 Antibody) at dilution 1/125.