

ZNF22 RABBIT PAB

Cat.#: S218188

Product Name: Anti-ZNF22 Rabbit Polyclonal Antibody

Synonyms: KOX15; HKR-T1; ZNF422; Zfp422

UNIPROT ID: P17026 (Gene Accession - BC010642)

Background: Binds DNA through the consensus sequence 5'-CAATG-3'. May be involved in transcriptional regulation and may play a role in tooth formation (By similarity).

Immunogen: Fusion protein of human ZNF22

Applications: ELISA, WB, IHC

Recommended Dilutions: IHC: 20-100;WB: 500-2000;ELISA: 5000-10000

Host Species: Rabbit

Clonality: Rabbit Polyclonal

Isotype: Immunogen-specific rabbit IgG

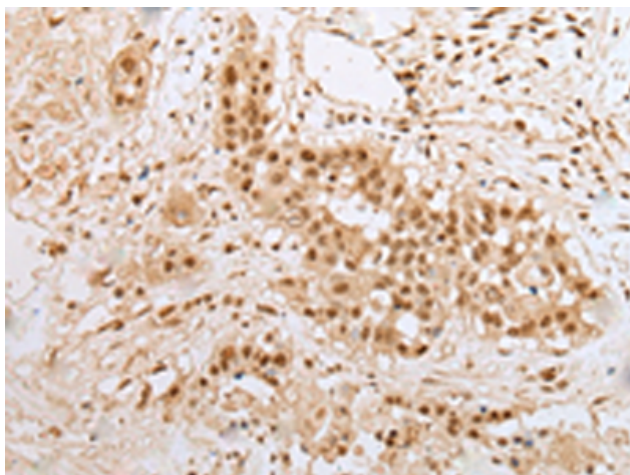
Purification: Antigen affinity purification

Species Reactivity: Human, Mouse, Rat

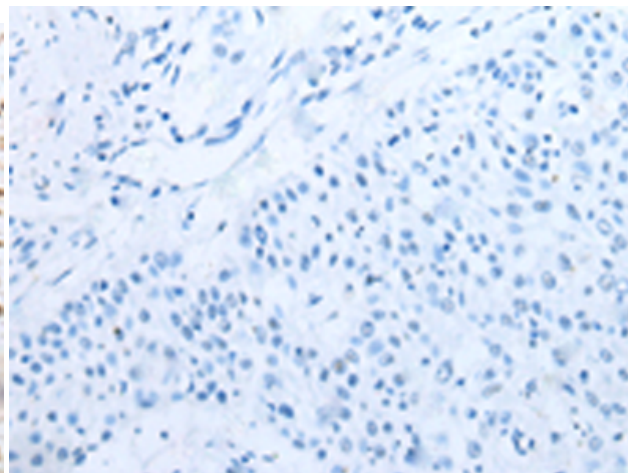
Constituents: PBS (without Mg²⁺ and Ca²⁺), pH 7.4, 150 mM NaCl, 0.05% Sodium Azide and 40% glycerol

Research Areas: Epigenetics and Nuclear Signaling

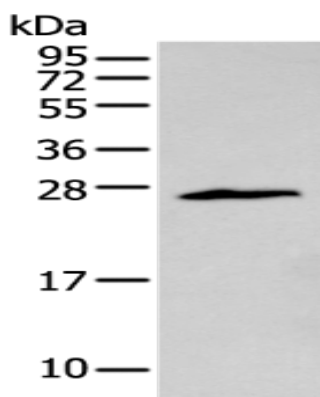
Storage & Shipping: Store at -20°C. Avoid repeated freezing and thawing



Immunohistochemistry analysis of paraffin embedded Human colorectal cancer tissue using 218188 (ZNF22 Antibody) at a dilution of 1/25 (Cytoplasm and Nucleus).



In comparison with the IHC on the left, the same paraffin-embedded Human colorectal cancer tissue is first treated with the fusion protein and then with 218188 (Anti-ZNF22 Antibody) at dilution 1/25.



Gel: 12% SDS-PAGE, Lysate: 40 μ g;
Lane: Jurkat cell;
Primary antibody: 218188 (ZNF22 Antibody) at dilution 1/400;
Secondary antibody: Goat anti rabbit IgG at 1/8000 dilution;
Exposure time: 10 seconds