

ZNF266 RABBIT PAB

Cat.#: S218241

Product Name: Anti-ZNF266 Rabbit Polyclonal Antibody

Synonyms: HZF1

UNIPROT ID: Q14584 (Gene Accession - BC017407)

Background: This gene encodes a protein containing many tandem zinc-finger motifs. Zinc fingers are protein or nucleic acid-binding domains, and may be involved in a variety of functions, including regulation of transcription. This gene is located in a cluster of similar genes encoding zinc finger proteins on chromosome 19. Alternative splicing results in multiple transcript variants for this gene.

Immunogen: Fusion protein of human ZNF266

Applications: ELISA, IHC

Recommended Dilutions: IHC: 50-200; ELISA: 5000-10000

Host Species: Rabbit

Clonality: Rabbit Polyclonal

Isotype: Immunogen-specific rabbit IgG

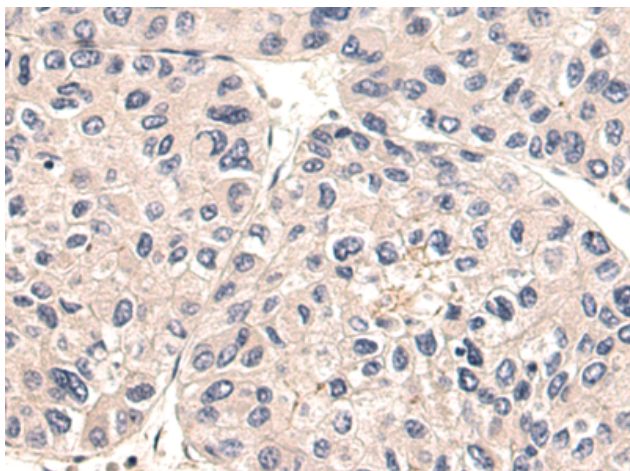
Purification: Antigen affinity purification

Species Reactivity: Human

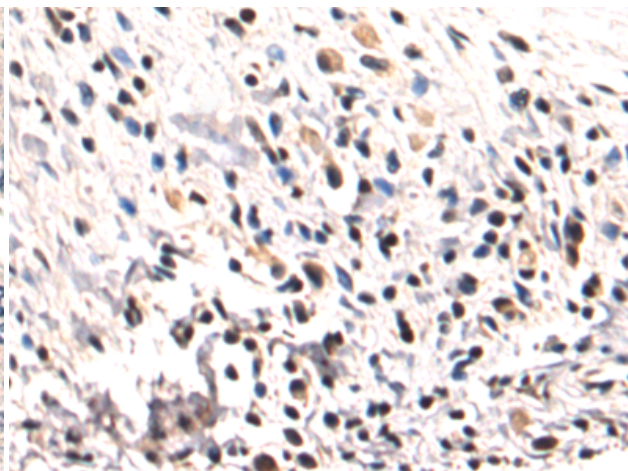
Constituents: PBS (without Mg²⁺ and Ca²⁺), pH 7.4, 150 mM NaCl, 0.05% Sodium Azide and 40% glycerol

Research Areas: Epigenetics and Nuclear Signaling

Storage & Shipping: Store at -20°C. Avoid repeated freezing and thawing



Immunohistochemistry analysis of paraffin-embedded Human liver cancer tissue using 218241(ZNF266 Antibody) at a dilution of 1/80(Cytoplasm or Nucleus).



Immunohistochemistry analysis of paraffin-embedded Human esophagus cancer tissue using 218241(Anti-ZNF266 Antibody) at a dilution of 1/80.