

## ZNF302 RABBIT PAB

**Cat.#:** S218244

**Product Name:** Anti-ZNF302 Rabbit Polyclonal Antibody

**Synonyms:** HSD16; MST154; ZNF327; MSTP154; ZNF135L; ZNF140L

**UNIPROT ID:** Q9NR11 (Gene Accession - BC024176 )

**Background:** This gene encodes a member of the zinc-finger protein family. The encoded protein contains seven C2H2-type zinc fingers and a KRAB domain, but its function has yet to be determined. Alternatively spliced transcript variants have been described.

**Immunogen:** Fusion protein of human ZNF302

**Applications:** ELISA, IHC

**Recommended Dilutions:** IHC: 25-100; ELISA: 5000-10000

**Host Species:** Rabbit

**Clonality:** Rabbit Polyclonal

**Isotype:** Immunogen-specific rabbit IgG

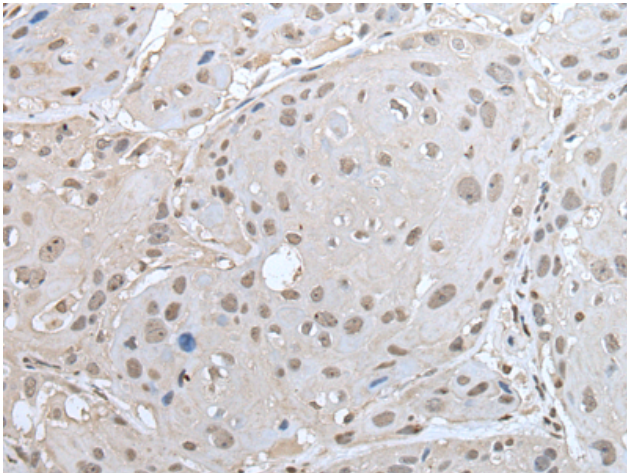
**Purification:** Antigen affinity purification

**Species Reactivity:** Human

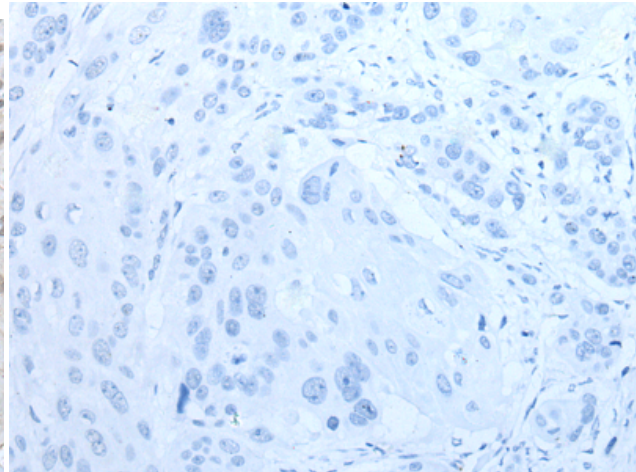
**Constituents:** PBS (without Mg<sup>2+</sup> and Ca<sup>2+</sup>), pH 7.4, 150 mM NaCl, 0.05% Sodium Azide and 40% glycerol

**Research Areas:** Epigenetics and Nuclear Signaling

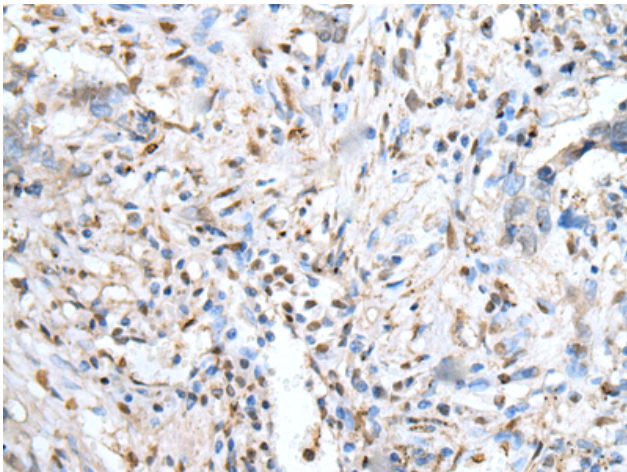
**Storage & Shipping:** Store at -20°C. Avoid repeated freezing and thawing



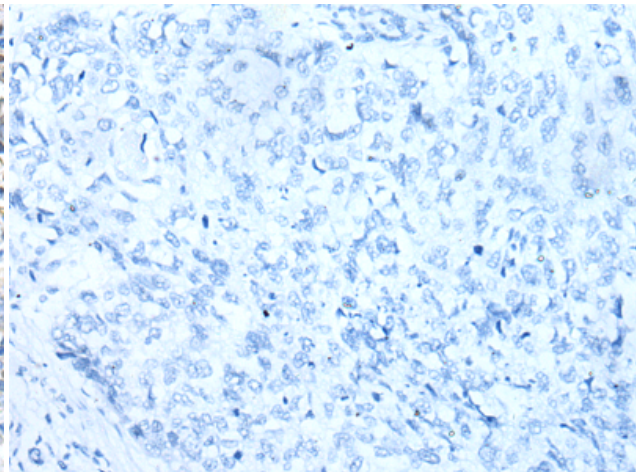
Immunohistochemistry analysis of paraffin embedded Human esophagus cancer tissue using 218244(ZNF302 Antibody) at a dilution of 1/30(Nucleus).



In comparison with the IHC on the left, the same paraffin-embedded Human esophagus cancer tissue is first treated with the fusion protein and then with 218244(Anti-ZNF302 Antibody) at dilution 1/30.



The image on the left is immunohistochemistry of paraffin-embedded Human lung cancer tissue using 218244(Anti-ZNF302 Antibody) at a dilution of 1/30.



In comparison with the IHC on the left, the same paraffin-embedded Human lung cancer tissue is first treated with fusion protein and then with D224018(Anti-ZNF302 Antibody) at dilution 1/30.