

ZNF420 RABBIT PAB

Cat.#: S221163

Product Name: Anti-ZNF420 Rabbit Polyclonal Antibody

Synonyms: APAK

UNIPROT ID: Q8TAQ5 (Gene Accession - NP_653290)

Background: May be involved in transcriptional regulation.

Immunogen: Synthetic peptide of human ZNF420

Applications: ELISA, IHC

Recommended Dilutions: IHC: Oct-50; ELISA: 1000-2000

Host Species: Rabbit

Clonality: Rabbit Polyclonal

Isotype: Immunogen-specific rabbit IgG

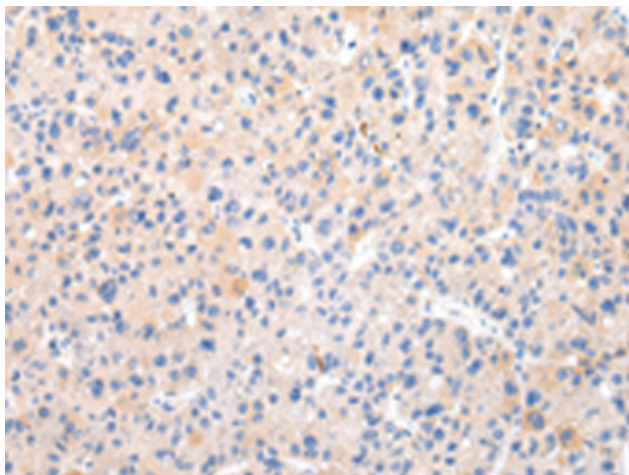
Purification: Antigen affinity purification

Species Reactivity: Human

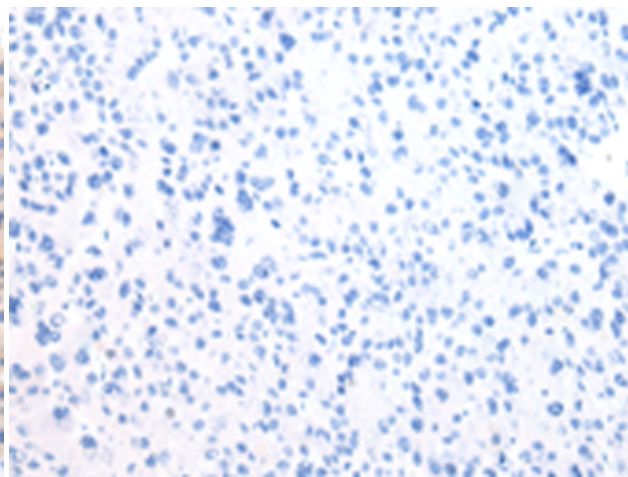
Constituents: PBS (without Mg²⁺ and Ca²⁺), pH 7.4, 150 mM NaCl, 0.05% Sodium Azide and 40% glycerol

Research Areas: Epigenetics and Nuclear Signaling, Cancer

Storage & Shipping: Store at -20°C. Avoid repeated freezing and thawing



Immunohistochemistry analysis of paraffin embedded Human liver cancer tissue using 221163(ZNF420 Antibody) at a dilution of 1/20(Cytoplasm).



In comparison with the IHC on the left, the same paraffin-embedded Human liver cancer tissue is first treated with the synthetic peptide and then with 221163(Anti-ZNF420 Antibody) at dilution 1/20.