

## ZNF473 RABBIT PAB

**Cat.#:** S218225

**Product Name:** Anti-ZNF473 Rabbit Polyclonal Antibody

**Synonyms:** ZN473; ZFP100

**UNIPROT ID:** Q8WTR7 (Gene Accession - BC018612 )

**Background:** This gene encodes a member of the Krueppel C2H2-type zinc-finger family of proteins. The encoded protein, a component of the U7 snRNP complex, plays a role in histone 3'-end pre-mRNA processing and may be required for cell cycle progression to S phase. Expression level and methylation status of this gene may be correlated with bone mineral density.

**Immunogen:** Fusion protein of human ZNF473

**Applications:** ELISA, WB, IHC

**Recommended Dilutions:** IHC: 50-200;WB: 1000-5000;ELISA: 5000-10000

**Host Species:** Rabbit

**Clonality:** Rabbit Polyclonal

**Isotype:** Immunogen-specific rabbit IgG

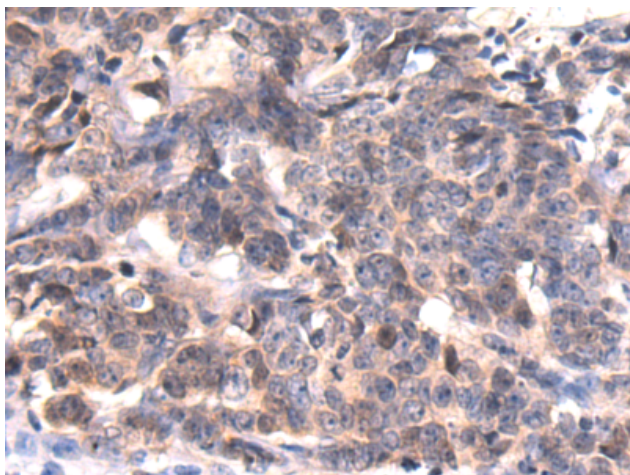
**Purification:** Antigen affinity purification

**Species Reactivity:** Human, Mouse

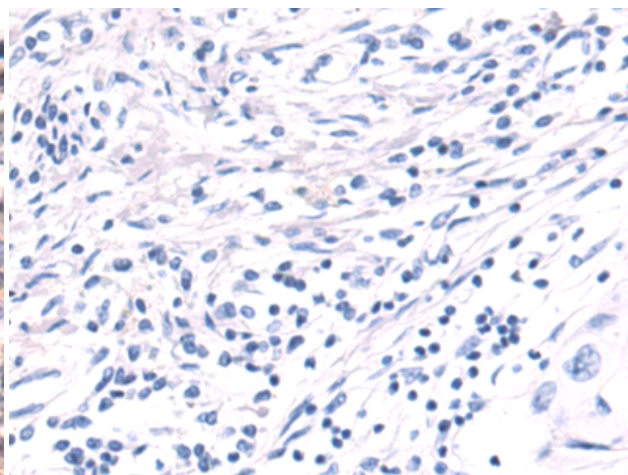
**Constituents:** PBS (without Mg<sup>2+</sup> and Ca<sup>2+</sup>), pH 7.4, 150 mM NaCl, 0.05% Sodium Azide and 40% glycerol

**Research Areas:** Epigenetics and Nuclear Signaling

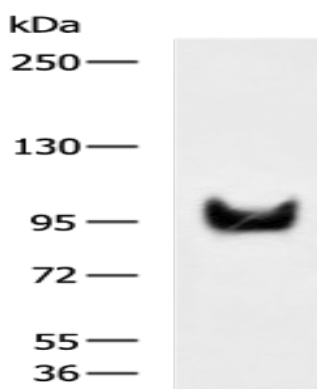
**Storage & Shipping:** Store at -20°C. Avoid repeated freezing and thawing



Immunohistochemistry analysis of paraffin embedded Human breast cancer tissue using 218225 (ZNF473 Antibody) at a dilution of 1/80 (Cytoplasm and Nucleus).



In comparison with the IHC on the left, the same paraffin-embedded Human breast cancer tissue is first treated with the fusion protein and then with 218225 (Anti-ZNF473 Antibody) at dilution 1/80.



Gel: 6% SDS-PAGE, Lysate: 40  $\mu$ g;  
Lane: TM4 cell lysate;  
Primary antibody: 218225 (ZNF473 Antibody) at dilution 1/1000;  
Secondary antibody: HRP-conjugated Goat anti rabbit IgG at 1/5000 dilution;  
Exposure time: 1 minute