

ZNF639 RABBIT PAB

Cat.#: S219484

Product Name: Anti-ZNF639 Rabbit Polyclonal Antibody

Synonyms: ZASC1; ANC-2H01; ANC_2H01

UNIPROT ID: Q9UID6 (Gene Accession - BC020500)

Background: This gene encodes a member of the Kruppel-like zinc finger family of proteins. Amplification and overexpression of this gene have been observed in esophageal squamous cell carcinoma. The encoded protein has been shown to bind DNA in a sequence-specific manner and may regulate HIV-1 gene expression. Alternative splicing results in multiple transcript variants.

Immunogen: Fusion protein of human ZNF639

Applications: ELISA, IHC

Recommended Dilutions: IHC: 100-300; ELISA: 5000-10000

Host Species: Rabbit

Clonality: Rabbit Polyclonal

Isotype: Immunogen-specific rabbit IgG

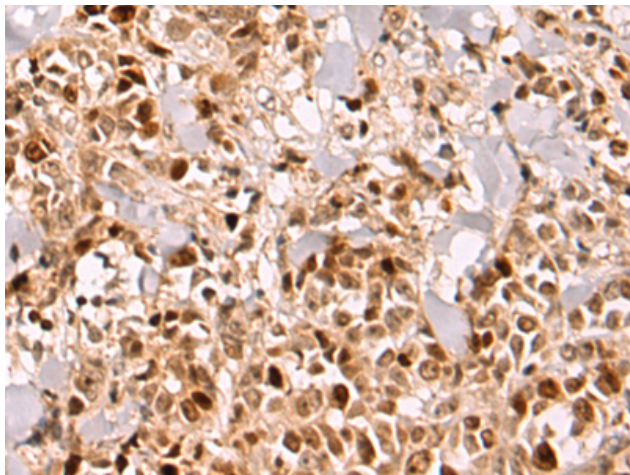
Purification: Antigen affinity purification

Species Reactivity: Human, Mouse, Rat

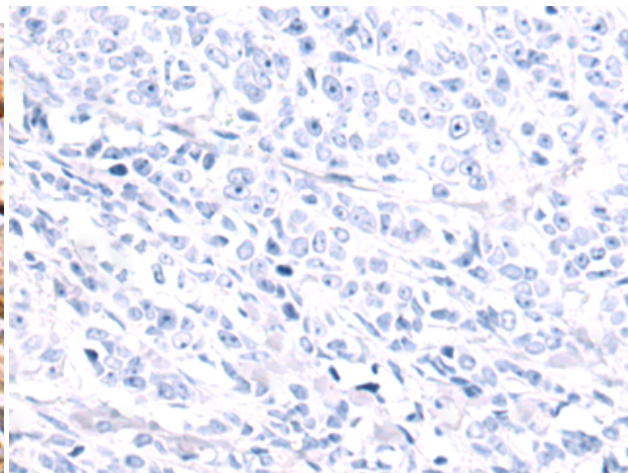
Constituents: PBS (without Mg²⁺ and Ca²⁺), pH 7.4, 150 mM NaCl, 0.05% Sodium Azide and 40% glycerol

Research Areas: Epigenetics and Nuclear Signaling

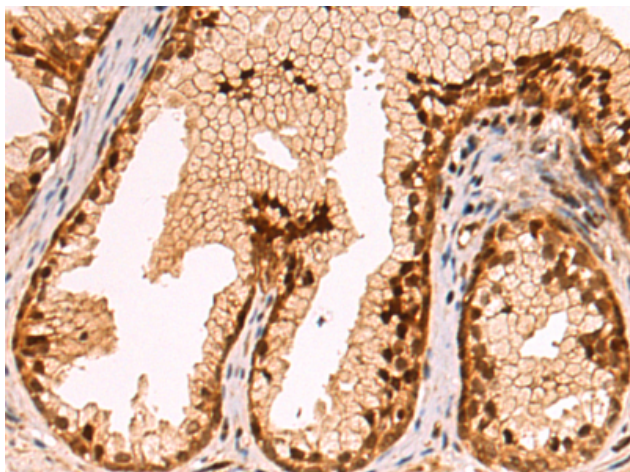
Storage & Shipping: Store at -20°C. Avoid repeated freezing and thawing



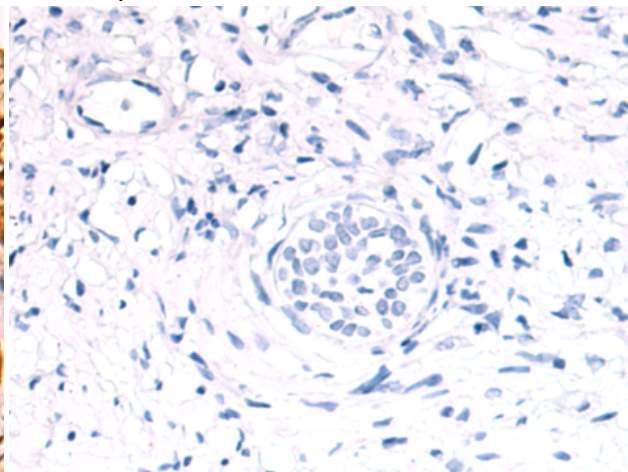
Immunohistochemistry analysis of paraffin embedded Human breast cancer tissue using 219484(ZNF639 Antibody) at a dilution of 1/100(Nucleus).



In comparison with the IHC on the left, the same paraffin-embedded Human breast cancer tissue is first treated with the fusion protein and then with 219484(Anti-ZNF639 Antibody) at dilution 1/100.



The image on the left is immunohistochemistry of paraffin-embedded Human prostate cancer tissue using 219484(Anti-ZNF639 Antibody) at a dilution of 1/100.



In comparison with the IHC on the left, the same paraffin-embedded Human prostate cancer tissue is first treated with fusion protein and then with D227323(Anti-ZNF639 Antibody) at dilution 1/100.