

ZNF85 RABBIT PAB

Cat.#: S215938

Product Name: Anti-ZNF85 Rabbit Polyclonal Antibody

Synonyms: HPF4; HTF1

UNIPROT ID: Q03923 (Gene Accession - NP_003420)

Background: Zinc-finger proteins contain DNA-binding domains and have a wide variety of functions, most of which encompass some form of transcriptional activation or repression. The majority of zinc-finger proteins contain a Krüppel-type DNA binding domain and a KRAB domain, which is thought to interact with KAP1, thereby recruiting histone modifying proteins. ZNF85 (Zinc finger protein 85), also known as zinc finger protein HPF4 or HTF1, is a member of the ZNF91 family and is thought to be involved in transcriptional regulation. ZNF85 is highly expressed in testicular tissue and localizes to the nucleus. ZNF85 contains sixteen C2H2-type zinc fingers and one KRAB domain through which it is thought to be involved in DNA-binding and transcriptional regulation.

Immunogen: Synthetic peptide of human ZNF85

Applications: ELISA, WB, IHC

Recommended Dilutions: IHC: 20-100;WB: 500-2000;ELISA: 5000-10000

Host Species: Rabbit

Clonality: Rabbit Polyclonal

Isotype: Immunogen-specific rabbit IgG

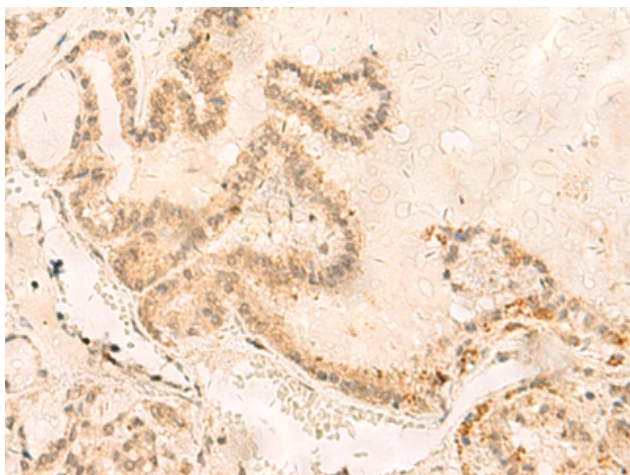
Purification: Antigen affinity purification

Species Reactivity: Human

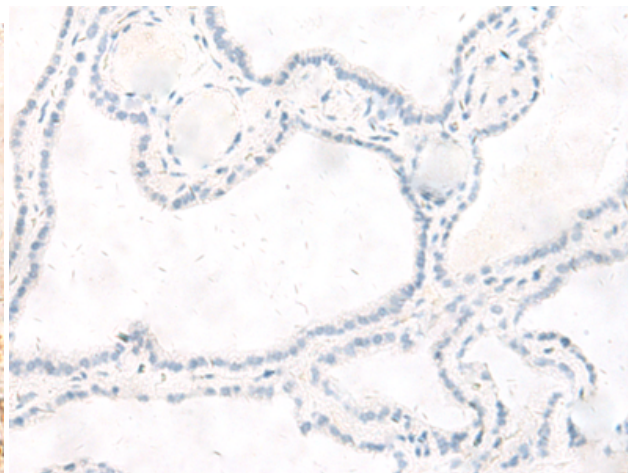
Constituents: PBS (without Mg²⁺ and Ca²⁺), pH 7.4, 150 mM NaCl, 0.05% Sodium Azide and 40% glycerol

Research Areas: Epigenetics and Nuclear Signaling

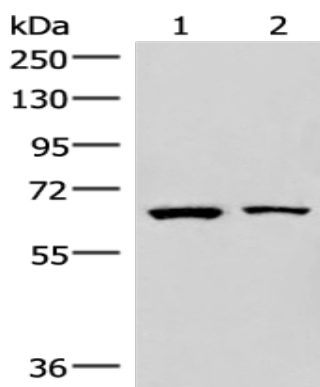
Storage & Shipping: Store at -20°C. Avoid repeated freezing and thawing



Immunohistochemistry analysis of paraffin embedded Human thyroid cancer tissue using 215938 (ZNF85 Antibody) at a dilution of 1/35 (Nucleus).



In comparison with the IHC on the left, the same paraffin-embedded Human thyroid cancer tissue is first treated with the synthetic peptide and then with 215938 (Anti-ZNF85 Antibody) at dilution 1/35.



Gel: 6% SDS-PAGE, Lysate: 40 μ g;
Lane 1-2: Raji and PC3 cell lysates;
Primary antibody: 215938 (ZNF85 Antibody) at dilution 1/400;
Secondary antibody: Goat anti rabbit IgG at 1/8000 dilution;
Exposure time: 10 seconds