

## ZP1 RABBIT PAB

**Cat.#:** S222427

**Product Name:** Anti-ZP1 Rabbit Polyclonal Antibody

**Synonyms:** OOMD; ZPBI; OOMDI; HEL163

**UNIPROT ID:** P60852 (Gene Accession - NP\_997224 )

**Background:** The zona pellucida is an extracellular matrix that surrounds the oocyte and early embryo. It is composed primarily of three or four glycoproteins with various functions during fertilization and preimplantation development. The protein encoded by this gene ensures the structural integrity of the zona pellucida. Mutations in this gene are a cause of oocyte maturation defect and infertility.

**Immunogen:** Synthetic peptide of human ZP1

**Applications:** ELISA, WB, IHC

**Recommended Dilutions:** IHC: 50-100;WB: 1000-5000;ELISA: 5000-10000

**Host Species:** Rabbit

**Clonality:** Rabbit Polyclonal

**Isotype:** Immunogen-specific rabbit IgG

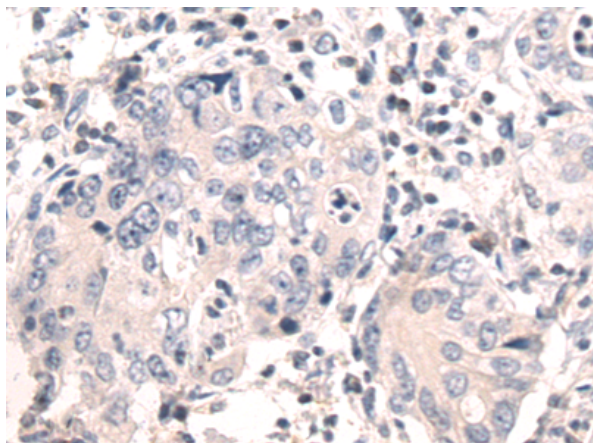
**Purification:** Antigen affinity purification

**Species Reactivity:** Human

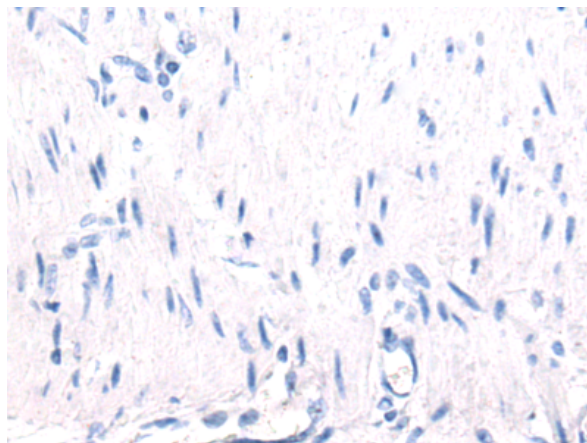
**Constituents:** PBS (without Mg<sup>2+</sup> and Ca<sup>2+</sup>), pH 7.4, 150 mM NaCl, 0.05% Sodium Azide and 40% glycerol

**Research Areas:** Developmental Biology

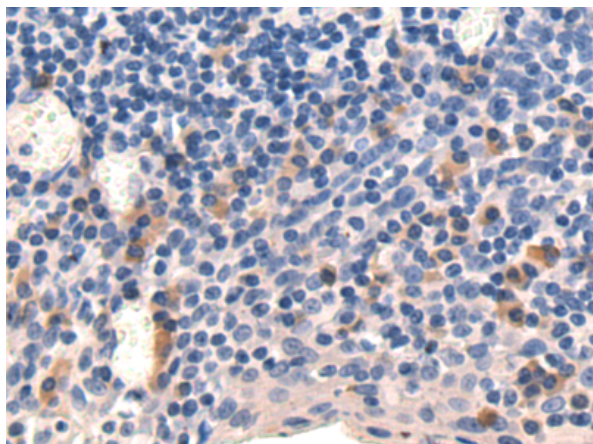
**Storage & Shipping:** Store at -20°C. Avoid repeated freezing and thawing



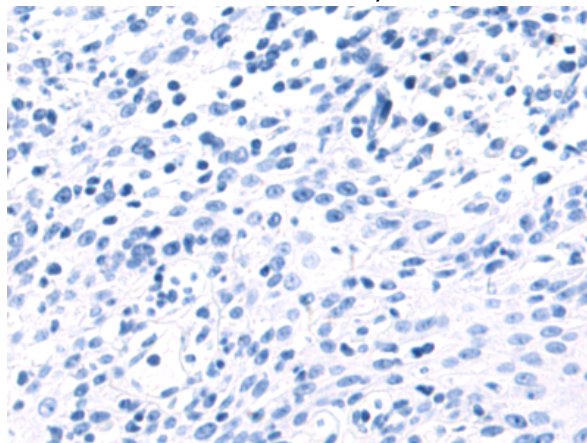
Immunohistochemistry analysis of paraffin embedded Human gastric cancer tissue using 222427(ZPI Antibody) at a dilution of 1/50(Cytoplasm).



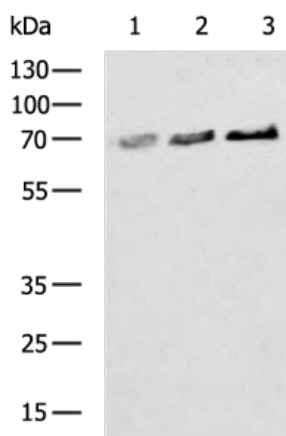
In comparison with the IHC on the left, the same paraffin-embedded Human gastric cancer tissue is first treated with the synthetic peptide and then with 222427(Anti-ZPI Antibody) at dilution 1/50.



The image on the left is immunohistochemistry of paraffin-embedded Human tonsil tissue using 222427(Anti-ZPI Antibody) at a dilution of 1/50.



In comparison with the IHC on the left, the same paraffin-embedded Human tonsil tissue is first treated with synthetic peptide and then with D264592(Anti-ZPI Antibody) at dilution 1/50.



Gel: 8%SDS-PAGE, Lysate: 40 µg;  
Lane 1-3: HeLa, 293T, SKOV3 cell lysates;  
Primary antibody: 222427(ZPI Antibody) at dilution 1/1200;  
Secondary antibody: HRP-conjugated Goat anti rabbit IgG at 1/5000 dilution;  
Exposure time: 15 seconds



# Product Description

Pioneering GTPase and Oncogene Product Development since 2010

---