

ZPBP2 RABBIT PAB

Cat.#: S218260

Product Name: Anti-ZPBP2 Rabbit Polyclonal Antibody

Synonyms: ZPBPL

UNIPROT ID: Q6X784 (Gene Accession - BC043152)

Background: Is implicated in sperm-oocyte interaction during fertilization.

Immunogen: Fusion protein of human ZPBP2

Applications: ELISA, IHC

Recommended Dilutions: IHC: 50-200; ELISA: 5000-10000

Host Species: Rabbit

Clonality: Rabbit Polyclonal

Isotype: Immunogen-specific rabbit IgG

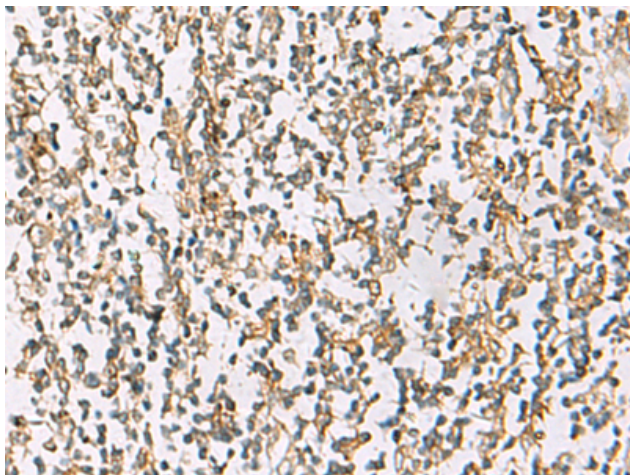
Purification: Antigen affinity purification

Species Reactivity: Human

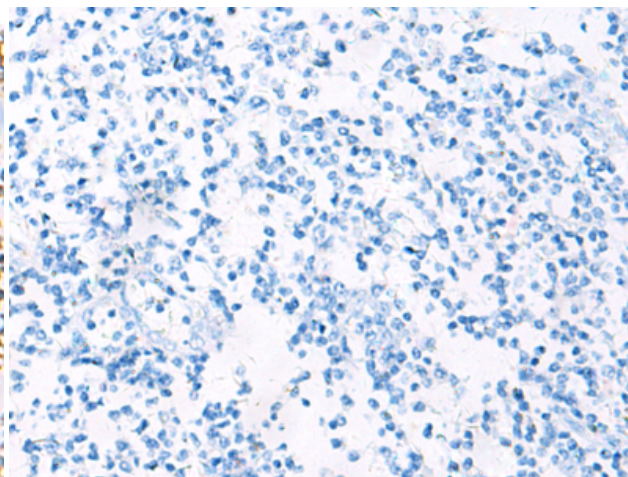
Constituents: PBS (without Mg²⁺ and Ca²⁺), pH 7.4, 150 mM NaCl, 0.05% Sodium Azide and 40% glycerol

Research Areas: Developmental Biology

Storage & Shipping: Store at -20°C. Avoid repeated freezing and thawing



Immunohistochemistry analysis of paraffin embedded Human tonsil tissue using 218260(ZPBP2 Antibody) at a dilution of 1/80(Secreted).



In comparison with the IHC on the left, the same paraffin-embedded Human tonsil tissue is first treated with the fusion protein and then with 218260(Anti-ZPBP2 Antibody) at dilution 1/80.