

ZPR1 RABBIT PAB

Cat.#: S221158

Product Name: Anti-ZPR1 Rabbit Polyclonal Antibody

Synonyms: ZNF259

UNIPROT ID: O75312 (Gene Accession - NP_003895)

Background: ZPR1 is a zinc finger-containing protein that is capable of binding to the intracellular tyrosine kinase domain of the epidermal growth factor receptor. Stimulation of mammalian cells with epidermal growth factor reduces ZPR1 affinity for the EGFR and leads to an accumulation of the protein in the nucleus. The ZPR1 zinc finger is necessary for its association with the EGFR.

Immunogen: Synthetic peptide of human ZPR1

Applications: ELISA, IHC

Recommended Dilutions: IHC: 25-100; ELISA: 2000-5000

Host Species: Rabbit

Clonality: Rabbit Polyclonal

Isotype: Immunogen-specific rabbit IgG

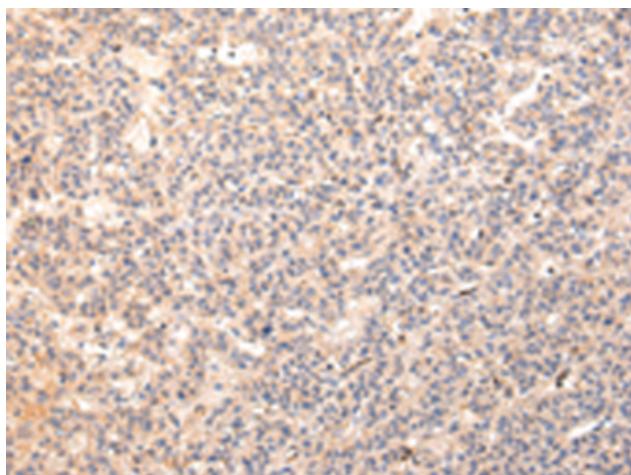
Purification: Antigen affinity purification

Species Reactivity: Human, Mouse

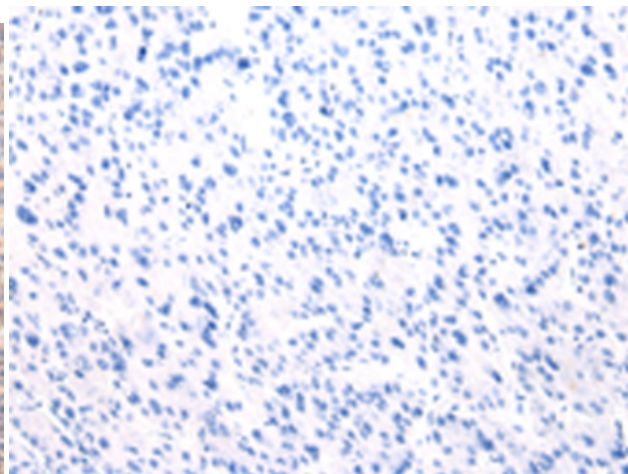
Constituents: PBS (without Mg²⁺ and Ca²⁺), pH 7.4, 150 mM NaCl, 0.05% Sodium Azide and 40% glycerol

Research Areas: Epigenetics and Nuclear Signaling

Storage & Shipping: Store at -20°C. Avoid repeated freezing and thawing



Immunohistochemistry analysis of paraffin embedded Human liver cancer tissue using 221158(ZPR1 Antibody) at a dilution of 1/20(Cytoplasm).



In comparison with the IHC on the left, the same paraffin-embedded Human liver cancer tissue is first treated with the synthetic peptide and then with 221158(Anti-ZPR1 Antibody) at dilution 1/20.