

ZYX RABBIT PAB

Cat.#: N225975

Product Name: Anti-ZYX Rabbit pAb

Synonyms: ESP2; HED2; ZYX; Zyxin2

UNIPROT ID: Q15942

Background: Zyxin binds alpha-actinin and the CRP proteins and is implicated in the regulation and modulation of actin filaments organization, cell adhesion, cell motility, mitosis, and signal transduction. Zyxin may shuttle between focal adhesion plaques and the nucleus. It has been suggested that zyxin is involved in gene transcription by its association with transcription factors in the nucleus.

Immunogen: A synthesized peptide derived from human Zyxin

Applications: WB,IHC-P,ICC/IF,IP,FC

Recommended Dilutions: WB: 1/500-1/1000 IHC: 1/50-1/100 IF: 1/50-1/200 IP: 1/20 FC: 1/50-1/100

Host Species: Rabbit

Clonality: Rabbit Polyclonal

Clone ID: -

MW: Calculated MW: 61 kDa; Observed MW: 78 kDa

Isotype: IgG

Purification: Affinity Chromatography

Species Reactivity: Human,Mouse

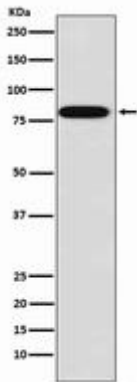
Conjugation: Unconjugated

Modification: Unmodified

Constituents: PBS (without Mg²⁺ and Ca²⁺), pH 7.3 containing 50% glycerol, 0.5% BSA and 0.02% sodium azide

Research Areas: Neuroscience

Storage & Shipping: Store at -20°C. Avoid repeated freezing and thawing



Western blot analysis of Zyxin in MCF-7 lysates using ZYX antibody.