

**HIS TAG MAB****Anti-HIS Tag Mouse Monoclonal Antibody****Cat. #:** 28004**Size:** 100 µL**Symbol:** His-tag**Description:** Anti-HIS Tag Mouse Monoclonal Antibody**Background:** The His-tag antibody recognizes any protein containing continuous 6 or more histidine residues.**Immunogen:** His synthetic peptide**Applications:** ELISA, WB, IF, IHC**Recommended Dilutions:**

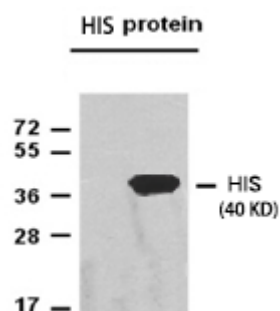
ELISA 1:2000–1:5000

WB 1:1000–1:5000

IF 1:100–1:200

**Concentration:** 1 mg/ml**Host Species:** Mouse**Format:** Liquid**Clonality:** Monoclonal**Isotype:** IgG**Purity:** Purified from ascites**Preservative:** No**Constituents:** PBS (without  $Mg^{2+}$  and  $Ca^{2+}$ ), pH 7.4, 150 mM NaCl, 50% glycerol**Species Reactivity:** Recognizes any protein containing continuous 6 histidine residues.**Storage Conditions:** Store at  $-20^{\circ}\text{C}$ . Avoid repeated freezing and thawing

## Western blot:



Western blot: Recombinant HIS tag fusion protein was diluted with HIS mouse monoclonal antibody (1:1000), and the protein loading amount was 50ng, and Western blot analysis was performed.