

ARF1 MAB**Arf1 Monoclonal Antibody****Cat. #:** 26019**Gene Symbol:** ARF1**Description:** Anti-Arf1 Mouse Monoclonal Antibody**Background:** ARF1 (ADP-ribosylation factor 1) is a member of the ARF super-family. ARF genes encode small GTPases that increase the ADP-ribosyltransferase activity of cholera toxin and are critical for vesicular trafficking as activators of phospholipase D. ARF1 protein is localized to the Golgi apparatus and has a central role in intra-Golgi transport.**Immunogen:** Recombinant full length protein of Arf1.**Applications:** ELISA, WB, IHC, IP**Recommended Dilutions:**

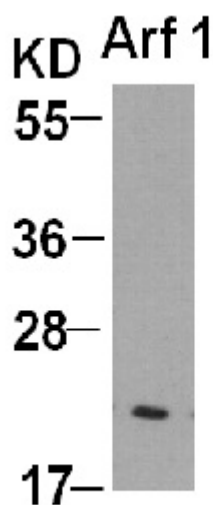
ELISA: 1:100–1:5000

WB: 1:100–1:2000

IHC: 1:50–1:100

Concentration: 1 mg/ml**Host Species:** Mouse**Format:** Liquid**Clonality:** Monoclonal**Isotype:** IgG**Purity:** Purified from ascites**Preservative:** No**Constituents:** PBS (without Mg²⁺ and Ca²⁺), pH 7.4, 150 mM NaCl, 50% glycerol**Species Reactivity:** Arf1 antibody recognizes Arf1 (maybe Arf2 and Arf3) of vertebrates.**Storage Conditions:** Store at -20°C. Avoid repeated freezing and thawing

Western blot:



WB: anti-Arf1 mAb

Western blot analysis of Arf1 proteins.