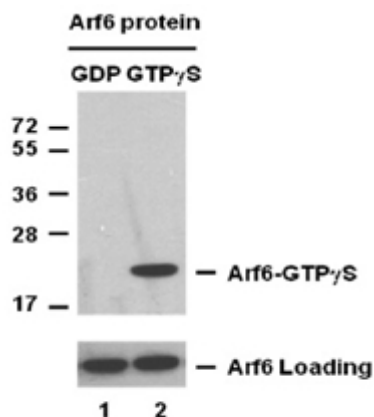


ARF6-GTP**Anti-Arf6GTP Monoclonal Antibody****Cat. #:** 26918**Size:** 30 µL**Gene Symbol:** ARF6**Description:** Anti-Arf6-GTP Monoclonal Antibody**Background:** ARF6 (ADP-ribosylation factor 6) is a member of the ARF super-family. ARF genes encode small GTPases that increase the ADP-ribosyltransferase activity of cholera toxin and are critical for vesicular trafficking as activators of phospholipase D. Arf6 regulates membrane trafficking and functions as a regulatory molecule of phagocytosis.**Immunogen:** Recombinant full length protein of active Arf6.**Applications:** IP, IHC and IF (**Not applicable for WB since SDS denatures Arf6 GTPase**)**Published Applications:** [IP, IHC and IF - Click for Details](#)**Recommended Dilutions:**

IP: 1 µg for 1~2 mg total cellular proteins

IHC, IF: 1:50-1:250

Concentration: 1 mg/ml**Host Species:** Mouse**Format:** Liquid**Clonality:** Monoclonal**Isotype:** IgG**Purity:** Purified from ascites**Preservative:** No**Constituents:** PBS (without Mg²⁺ and Ca²⁺), pH 7.4, 150 mM NaCl, 50% glycerol**Species Reactivity:** Anti-Arf6-GTP monoclonal antibody recognizes active Arf6 from vertebrates.**Storage Conditions:** Store at -20°C. Avoid repeated freezing and thawing**Immunoprecipitation/Western blot:**



IP: anti-active Arf6 mAb

IB: anti-Arf6 pAb

Arf6 activation assay.

Purified full-length Arf6 proteins were immunoprecipitated after treated with GDP (lane left) or GTP γ S (lane right). Immunoprecipitation was done with the anti-Arf6-GTP monoclonal antibody (Cat. No. 26918). Immunoblot was with an anti-Arf6 polyclonal antibody (Cat. No. 21032).