

## ARF6 MAB

### Anti-Arf6 Antibody

**Cat. #:** 26029

**Gene Symbol:** ARF6

**Description:** Anti-Arf6 Mouse Monoclonal Antibody

**Background:** ARF6 (ADP-ribosylation factor 6) is a member of the ARF super-family. ARF genes encode small GTPases that increase the ADP-ribosyltransferase activity of cholera toxin and are critical for vesicular trafficking as activators of phospholipase D. Arf6 regulates membrane trafficking and the actin cytoskeleton at the plasma membrane and functions as a regulatory molecule of phagocytosis.

**Immunogen:** Recombinant full length protein of Arf6.

**Applications:** ELISA, WB, IHC, IP

**Recommended Dilutions:**

ELISA: 1:100–1:5000

WB: 1:100–1:1000

IHC: 1:10–1:1000

**Concentration:** 1 mg/ml

**Host Species:** Mouse

**Format:** Liquid

**Clonality:** Monoclonal

**Isotype:** IgG

**Purity:** Purified from ascites

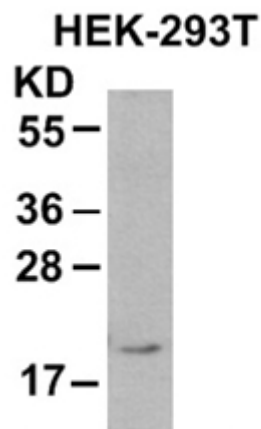
**Preservative:** No

**Constituents:** PBS (without  $Mg^{2+}$  and  $Ca^{2+}$ ), pH 7.4, 150 mM NaCl, 50% glycerol

**Species Reactivity:** Arf6 antibody recognizes Arf6 of vertebrates.

**Storage Conditions:** Store at  $-20^{\circ}C$ . Avoid repeated freezing and thawing

## Immunoprecipitation/Western blot:



**WB:anti-Arf6 mAb**

HEK-293 whole-cell lysate was used for western blot (Cat# 26029).