

ARL1-GTP

Anti-Arl1GTP Mouse Monoclonal Antibody

Cat. #: 26924

Size: 30 μ L

Gene Symbol: Arl1

Description: Anti-Arl1-GTP Mouse Monoclonal Antibody

Background: Arl1 (Arf-like 1) localizes to the Golgi complex, where it is believed to recruit effector proteins to the trans-Golgi network. Golgi-localized proteins golgin-97 and golgin-245 have been shown as Arl1 effectors. Additional Arl1 effectors include the GARP (Golgi-associated retrograde protein)/VFT (Vps53) vesicle-tethering complex and Arfaptin 2. In *Drosophila* zygotes, mutation of Arl1 is lethal.

Immunogen: Recombinant Arl1 protein (active form)

Applications: IP, IHC and IF (**Not applicable for WB since SDS denatures Arl1 GTPase**)

Recommended Dilutions:

IP: 1 μ g for 1~2 mg total cellular proteins

IHC, IF: 1:50-1:250

Concentration: 1 mg/ml

Host Species: Mouse

Format: Liquid

Clonality: Monoclonal

Isotype: IgG

Purity: Purified from ascites

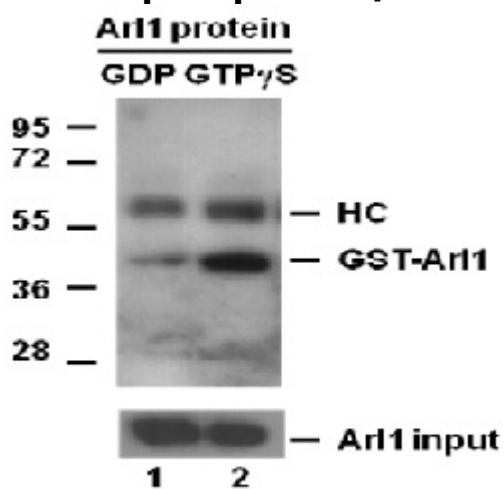
Preservative: No

Constituents: PBS (without Mg^{2+} and Ca^{2+}), pH 7.4, 150 mM NaCl, 50% glycerol

Species Reactivity: Arl1 antibody recognizes active Arl1-GTP from vertebrates.

Storage Conditions: Store at $-20^{\circ}C$. Avoid repeated freezing and thawing

Immunoprecipitation/Western blot:



IP: anti-active Arl1 mAb

IB: anti-Arl1 mAb

Arl1 Activation Assay. Purified GST-tagged Arl1 proteins (Cat. #10136) were immunoprecipitated with the anti-active Arl1 monoclonal antibody (Cat. # 26924) after treated with GDP (lane 1) or GTP_γS (lane 2), and was blotted with anti- Arl1 monoclonal antibody (Cat. #26056). Arl1 protein input control is shown in the bottom panel.