

ARL1(Q71L) PROTEIN**Arl1(Q71L) Protein****Cat. #:** 10156**Product Name:** Arl1 Protein Q71L mutant**Synonyms:** ADP-ribosylation factor-like 1, ARFL1**Source:** Human, recombinant full length, His6-tag**Expression Host Species:** E. coli**Molecular Weight:** 20 kDa**Purity:** >95% by SDS-PAGE

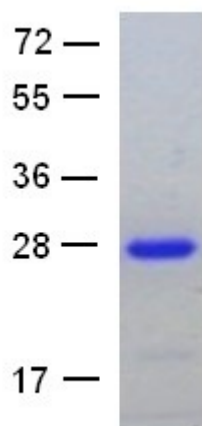
Introduction: Arl1 is a member of the Arf family of regulatory GTPases, within the Ras superfamily of GTPases (ARFs). ARFs, described as activators of cholera toxin (CT) ADP-ribosyltransferase activity, regulate intracellular vesicular membrane trafficking, and stimulate a phospholipase D (PLD) isoform.

Amino Acid Sequence (1-181, Q71L)

**MGGFFSSIFSSLFGTREMRLILGLDGAGKTTILYRLQVGEVTTIPTIGFNVETVITYKNLKFQVWD
LGGLTSIRPYWRCYYSNTDAVIYVVDSCDRDRIGISKSELVAMLEEEELRKAILVVFANKQDMEQAM
TSSEMANSGLPALPKDRKWQIFKTSATKGTGLDEAMEWLVELKSRQ**

Properties**Physical Appearance (form):** Dissolved in 20mM Tris-HCl, pH8.0, 150mM NaCl.**Physical Appearance (form):** White or clear**Concentration:** 1 mg/mL**Storage:** -80°C**Preparation Instructions:**

Centrifuge the vial before open the cap and reconstitute in water. Adding of 10 mM β -mercaptoethanol or 1 mM DTT into the solution to protect the protein is recommended and using of non-ionic detergents such as n-Dodecyl β -D-maltoside (DoDM) or polyethylene detergents (e.g. C12E10) also help to stabilize the protein. Avoid repeated freezing and thawing after reconstitution. The purity of His-tagged Arl1 Q71L was determined by SDS-PAGE and Coomassie Brilliant Blue Staining

**References:**

1. Hong, J.-X. et al., J. Biol. Chem. 273: 15872-15876, 1998.
2. Zhang, G.-F. et al., J. Biol. Chem. 270: 21-24, 1995.