

## ARL3-GTP

### Anti-Arl3GTP Mouse Monoclonal Antibody

**Cat. #:** 26925

**Gene Symbol:** ARL3

**Description:** Anti-Arl3-GTP Mouse Monoclonal Antibody

**Background:** Arl3 (Arf-like 3) is an Arf family protein. Arl3 binds microtubules to alter specific aspects of cytokinesis. It has been proposed that retinitis pigmentosa 2 functions in concert with Arl3 to link the cell membrane and the cytoskeleton in photoreceptors as part of the cell signaling or vesicular transport machinery.

**Immunogen:** Recombinant Arl3 protein (active form)

**Applications:** IP, IHC and IF (**Not applicable for WB since SDS denatures Arl3 GTPase**)

**Recommended Dilutions:**

IP: 1 µg for 1~2 mg total cellular proteins

IHC, IF: 1:50-1:250

**Concentration:** 1 mg/ml

**Host Species:** Mouse

**Format:** Liquid

**Clonality:** Monoclonal

**Isotype:** IgG

**Purity:** Purified from ascites

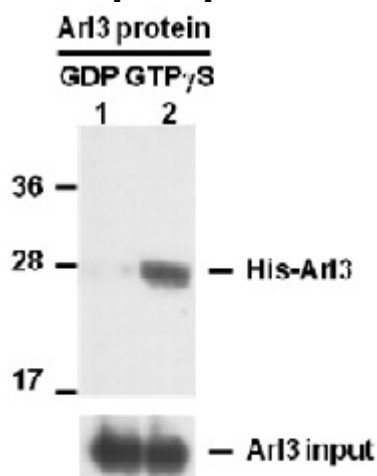
**Preservative:** No

**Constituents:** PBS (without Mg<sup>2+</sup> and Ca<sup>2+</sup>), pH 7.4, 150 mM NaCl, 50% glycerol

**Species Reactivity:** Arl3 antibody recognizes active Arl3-GTP from vertebrates.

**Storage Conditions:** Store at -20°C. Avoid repeated freezing and thawing

## Immunoprecipitation/Western blot:



**IP:** anti-active Arl3 mAb

**IB:** anti-Arl3 mAb

### Arl3 Activation Assay.

Purified His-tagged Arl3 proteins (Cat. #10152) were immunoprecipitated with the anti-active Arl3 monoclonal antibody (Cat. #26925) after treated with GDP (lane 1) or GTP $\gamma$ S (lane 2), and was blotted with anti-Arl3 monoclonal antibody (Cat. #21070). Input controls are shown in the bottom panel.