

ARL3 MAB**Arl3 Monoclonal Antibody****Cat. #:** 26070**Gene Symbol:** ARL3**Description:** Anti-Arl3 Mouse Monoclonal Antibody**Background:** Arl3 (Arf-like 3) is an Arf family protein. Arl3 binds microtubules to alter specific aspects of cytokinesis. It has been proposed that retinitis pigmentosa 2 functions in concert with Arl3 to link the cell membrane and the cytoskeleton in photoreceptors as part of the cell signaling or vesicular transport machinery.**Immunogen:** : Recombinant Arl3 protein**Applications:** ELISA, WB, IHC, IP**Recommended Dilutions:**

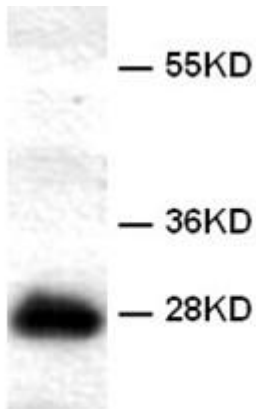
ELISA: 1:100–1:5000

WB: 1:100–1:2000

IHC: 1:10–1:100

Concentration: 1 mg/ml**Host Species:** Mouse**Format:** Liquid**Clonality:** Monoclonal**Isotype:** IgG**Purity:** Purified from ascites**Preservative:** No**Constituents:** PBS (without Mg^{2+} and Ca^{2+}), pH 7.4, 150 mM NaCl, 50% glycerol**Species Reactivity:** Arl3 antibody recognizes Arl3 from vertebrates.**Storage Conditions:** Store at $-20^{\circ}C$. Avoid repeated freezing and thawing

Western blot:



WB: Anti-Arl3 mAb

Western blot analysis of recombinant Arl3 proteins.

Purified his-tagged Arl3 protein (cat. # 10152) was blotted with anti-Arl3 monoclonal antibody (cat. # 26070).