

PDL1 MAB (ATEZOLIZUMAB)

Cat.#: 28018

Product Name: Anti-PDL1 (Atezolizumab) Monoclonal Antibody

Synonyms: PD-L1;CD274;B7-H1;PDCD1L1;PDCD1LG1

Description: Anti-PDL1 (atezolizumab) Monoclonal Antibody

Background: Research grade biosimilar. Not for use in therapeutic or diagnostic procedures for humans or animals.

Applications: ELISA; Flow Cyt

Recommended Dilutions: ELISA 1:5000-10000; Flow Cyt 1:100

Host Species: Humanized

Isotype: IgG1

Purification: Purified from cell culture supernatant by affinity chromatography

Species Reactivity: Human PDL1

Constituents: Lyophilized from sterile PBS, pH 7.4. 5 % – 8% trehalose is added as protectants before lyophilization.

Storage & Shipping: Store at -20°C to -80°C for 12 months in lyophilized form. After reconstitution, if not intended for use within a month, aliquot and store at -80°C (Avoid repeated freezing and thawing).

Anti-PDL1 (atezolizumab biosimilar) mAb ELISA

0.2 µg of Human PDL1, mFc-His Tagged protein per well

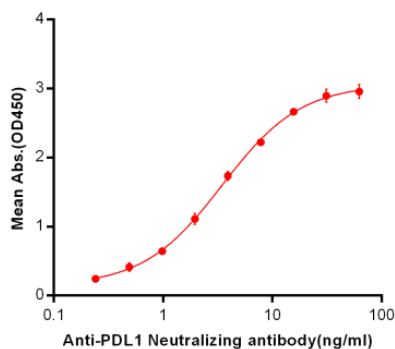


Figure 1. ELISA plate pre-coated by 2 µg/ml (100 µl/well) Human PDL1, mFc-His tagged protein 11151 can bind Anti-PDL1 Neutralizing antibody in a linear range of 0.24-7.81 ng/ml.

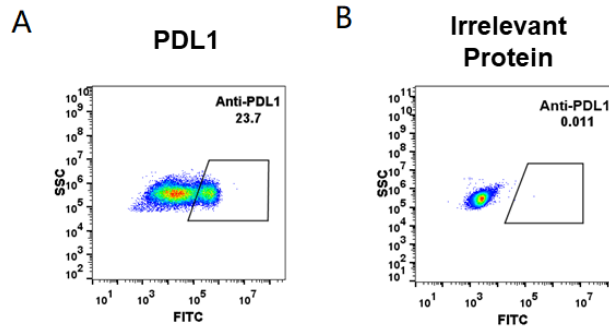


Figure 2. HEK293 cell line transfected with irrelevant protein (B) and human PDL1 (A) were surface stained with anti-PDL1 neutralizing antibody 1 µg/ml (atezolizumab) followed by Alexa 488-conjugated anti-human IgG secondary antibody.