

AXL (DM158) RABBIT MAB**Cat.#:** 28502**Product Name:** Anti-AXL(DM158) Rabbit Monoclonal Antibody**Synonyms:** AXL;UFO**Description:** Anti-AXL antibody(DM158) Rabbit Monoclonal Antibody

Background: The protein encoded by this gene is a member of the Tyro3-Axl-Mer (TAM) receptor tyrosine kinase subfamily. The encoded protein possesses an extracellular domain which is composed of two immunoglobulin-like motifs at the N-terminal; followed by two fibronectin type-III motifs. It transduces signals from the extracellular matrix into the cytoplasm by binding to the vitamin K-dependent protein growth arrest-specific 6 (Gas6). This gene may be involved in several cellular functions including growth; migration; aggregation and anti-inflammation in multiple cell types. Alternative splicing results in multiple transcript variants of this gene.

Applications: ELISA; Flow Cyt**Recommended Dilutions:** ELISA 1:5000-10000; Flow Cyt 1:100**Host Species:** Rabbit**Isotype:** Rabbit IgG**Purification:** Purified from cell culture supernatant by affinity chromatography**Species Reactivity:** Human AXL**Constituents:** Lyophilized from sterile PBS, pH 7.4. 5 % – 8% trehalose is added as protectants before lyophilization.**Storage & Shipping:** Store at -20°C to -80°C for 12 months in lyophilized form. After reconstitution, if not intended for use within a month, aliquot and store at -80°C (Avoid repeated freezing and thawing).

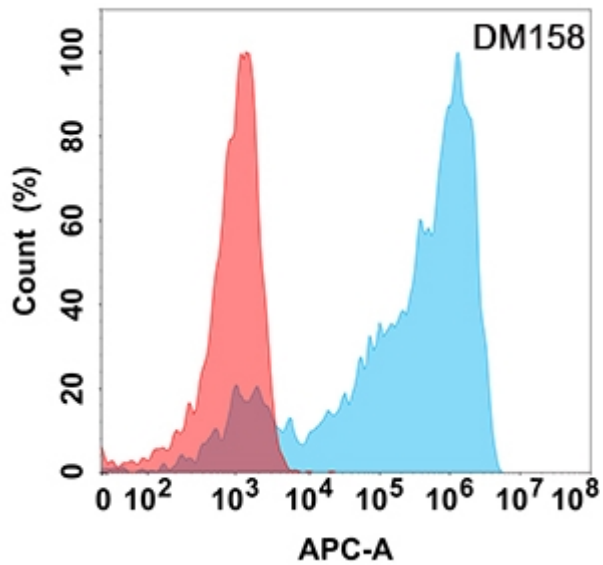


Figure 1. Flow cytometry analysis with Anti-AXL (DM158) on Expi293 cells transfected with human AXL (Blue histogram) or Expi293 transfected with irrelevant protein (Red histogram).