

B7-1 (DM111) RABBIT MAB

Cat.#: 28456

Product Name: Anti-B7-1(DM111) Rabbit Monoclonal Antibody

Synonyms: CD80;B7;B7-1;B7.1;BB1;CD28LG;CD28LG1;LAB7

Description: Anti-B7-1 antibody(DM111) Rabbit Monoclonal Antibody

Background: The protein encoded by this gene is a membrane receptor that is activated by the binding of CD28 or CTLA-4. The activated protein induces T-cell proliferation and cytokine production. This protein can act as a receptor for adenovirus subgroup B and may play a role in lupus neuropathy.

Applications: ELISA; Flow Cyt

Recommended Dilutions: ELISA 1:5000-10000; Flow Cyt 1:100

Host Species: Rabbit

Isotype: Rabbit IgG

Purification: Purified from cell culture supernatant by affinity chromatography

Species Reactivity: Human B7-1

Constituents: Lyophilized from sterile PBS, pH 7.4. 5 % – 8 % trehalose is added as protectants before lyophilization.

Storage & Shipping: Store at -20°C to -80°C for 12 months in lyophilized form. After reconstitution, if not intended for use within a month, aliquot and store at -80°C (Avoid repeated freezing and thawing).

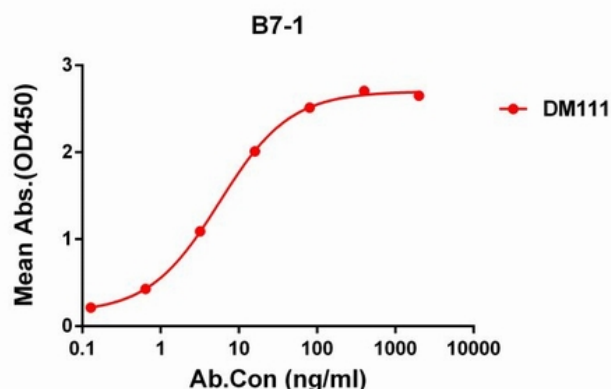


Figure 1. ELISA plate pre-coated by 2 µg/ml (100 µl/well) Human B7-1 protein, hFc tagged protein 11283 can bind Rabbit anti-B7-1 monoclonal antibody (clone: DM111) in a linear range of 0.2-80 ng/ml.

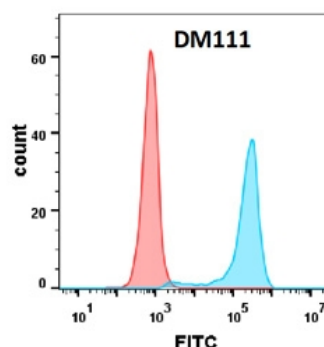


Figure 2. Flow cytometry analysis with Anti-B7-1 (DM111) on Expi293 cells transfected with human B7-1 (Blue histogram) or Expi293 transfected with irrelevant protein (Red histogram).