

## **B7-H4 (DM188) RABBIT MAB**

**Cat.#:** 28531

**Product Name:** Anti-B7-H4(DM188) Rabbit Monoclonal Antibody

**Synonyms:** B7-H4;B7h.5;B7H4;B7S1;B7X;PRO129I;VCTN1

**Description:** Anti-B7-H4 antibody(DM188) Rabbit Monoclonal Antibody

**Background:** This gene encodes a protein belonging to the B7 costimulatory protein family. Proteins in this family are present on the surface of antigen-presenting cells and interact with ligand bound to receptors on the surface of T cells. Studies have shown that high levels of the encoded protein has been correlated with tumor progression. A pseudogene of this gene is located on chromosome 20. Multiple transcript variants encoding different isoforms have been found for this gene.

**Applications:** ELISA; Flow Cyt

**Recommended Dilutions:** ELISA 1:5000-10000; Flow Cyt 1:100

**Host Species:** Rabbit

**Isotype:** Rabbit IgG

**Purification:** Purified from cell culture supernatant by affinity chromatography

**Species Reactivity:** Human B7-H4

**Constituents:** Lyophilized from sterile PBS, pH 7.4. 5 % – 8% trehalose is added as protectants before lyophilization.

**Storage & Shipping:** Store at -20°C to -80°C for 12 months in lyophilized form. After reconstitution, if not intended for use within a month, aliquot and store at -80°C (Avoid repeated freezing and thawing).

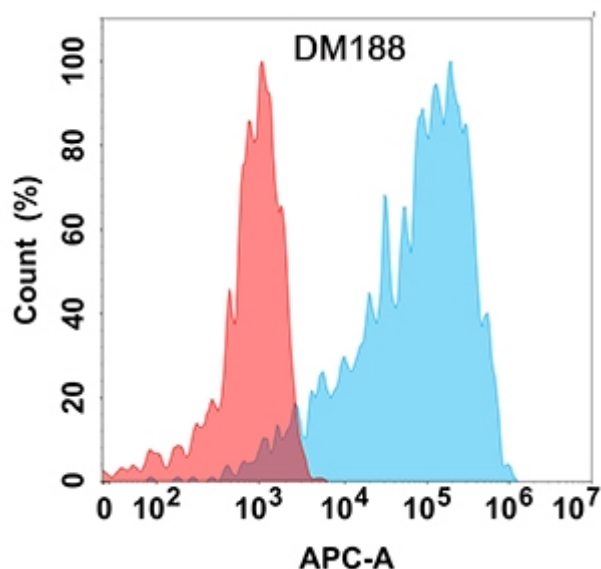


Figure 1. Flow cytometry analysis with Anti-B7H4 (DM188) on Expi293 cells transfected with human B7H4 (Blue histogram) or Expi293 transfected with irrelevant protein (Red histogram).