

B7-H6 (DM153) RABBIT MAB

Cat.#: 28497

Product Name: Anti-B7-H6(DM153) Rabbit Monoclonal Antibody

Synonyms: B7-H6;NCR3LG1;B7 Homolog 6

Description: Anti-B7-H6 antibody(DM153) Rabbit Monoclonal Antibody

Background: B7-H6 belongs to the B7 family (see MIM 605402) and is selectively expressed on tumor cells. Interaction of B7H6 with Nkp30 (NCR3; MIM 611550) results in natural killer (NK) cell activation and cytotoxicity.

Applications: ELISA; Flow Cyt

Recommended Dilutions: ELISA 1:5000-10000; Flow Cyt 1:100

Host Species: Rabbit

Isotype: Rabbit IgG

Purification: Purified from cell culture supernatant by affinity chromatography

Species Reactivity: Human B7-H6

Constituents: Lyophilized from sterile PBS, pH 7.4. 5 % – 8% trehalose is added as protectants before lyophilization.

Storage & Shipping: Store at -20°C to -80°C for 12 months in lyophilized form. After reconstitution, if not intended for use within a month, aliquot and store at -80°C (Avoid repeated freezing and thawing).

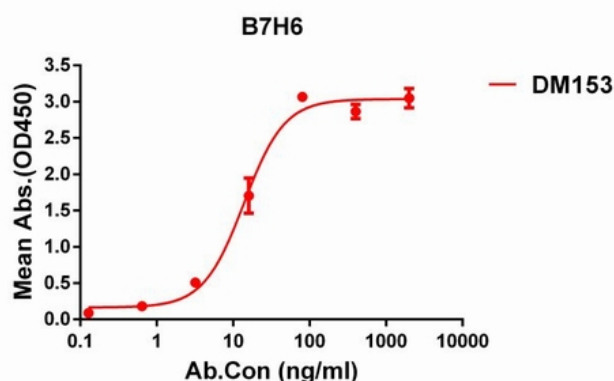


Figure 1. ELISA plate pre-coated by 1 µg/ml (100 µl/well) Human B7H6 protein, His tagged protein 11313 can bind Rabbit anti-B7H6 monoclonal antibody (clone: DM153) in a linear range of 5-100 ng/ml.

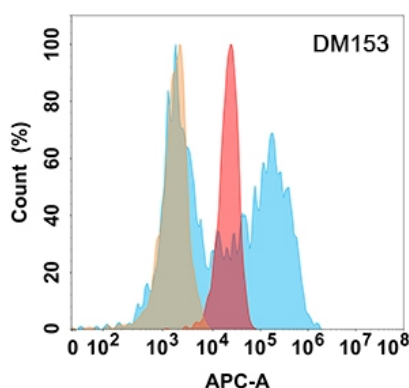


Figure 2. B7H6 protein is highly expressed on the surface of Expi293 cell membrane. Flow cytometry analysis with Anti-B7H6 (DM153) on Expi293 cells transfected with human B7H6 (Blue histogram) or Expi293 transfected with irrelevant protein (Red histogram), and Isotype antibody on Expi293 transfected with irrelevant protein (Orange histogram).